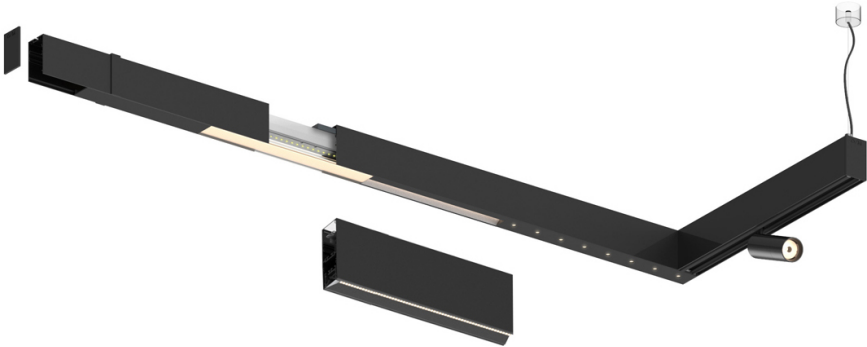
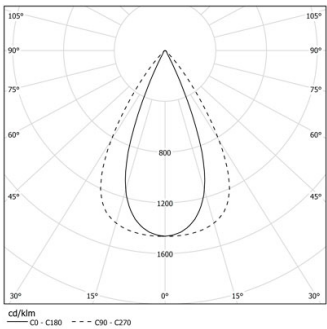


Design: O/M + Bartenbach GmbH

LED CRI>90 / >50.000h, L80/B10 / 2-step MacAdam  
Power supply included.  
IP20 | 230Vac | 50/60Hz



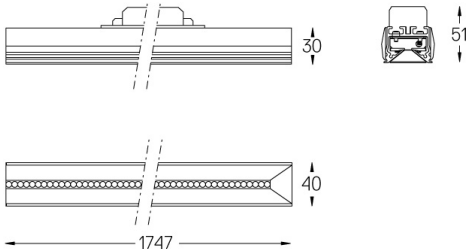
LED	4000K	Lichtquelle	Leuchte
Leistung		28W	33W
Strom		3900lm	3120lm
Effizienz		141lm/W	96lm/W
LOR		-	0.8
UGR		-	<16



Abstrahlwinkel  
Flood 65°

Anwendung

Gewicht



### Ausführungen

- .01 Weiß / RAL 9010
- .02 Schwarz / RAL 9005