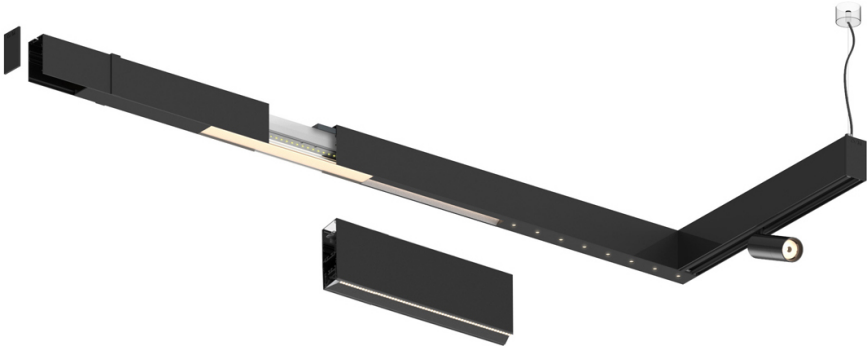

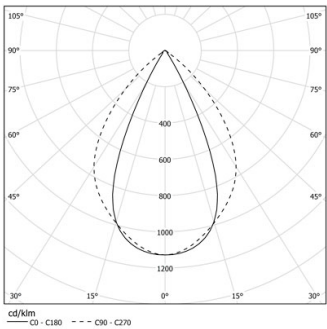


Design: O/M + Bartenbach GmbH

LED CRI>80 / >50.000h, L80/B10 / 2-step MacAdam
Power supply included.
IP20 | 230Vac | 50/60Hz



	2200K-5000K	Lichtquelle	Leuchte
Leistung	23W*		27W*
Strom	2920lm*		2320lm*
Effizienz	120lm/W		85lm/W
LOR	-		0.8273381294964028
UGR	-		<19



Abstrahlwinkel
Wide flood 80°

Anwendung

Gewicht



Ausführungen

- .01 Weiß / RAL 9010
- .02 Schwarz / RAL 9005

