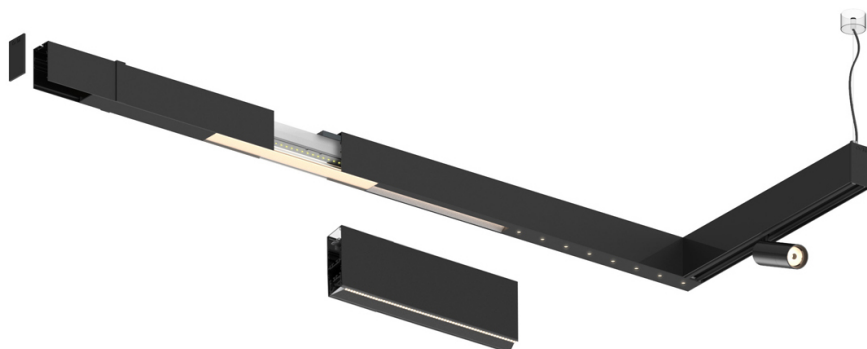

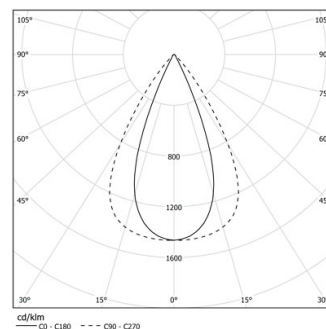


Design: O/M + Bartenbach GmbH

LED CRI>80 / >50.000h, L80/B10 / 2-step MacAdam
Power supply included.
IP20 | 230Vac | 50/60Hz



 LED	2200K-5000K	Lichtquelle	Leuchte
Leistung		28W*	33W*
Strom		3650lm*	2900lm*
Effizienz		120lm/W	85lm/W
LOR		-	0.8273381294964028
UGR		-	<13



Abstrahlwinkel
Flood 65°

Anwendung

Gewicht



Ausführungen

- .01 Weiß / RAL 9010
- .02 Schwarz / RAL 9005

