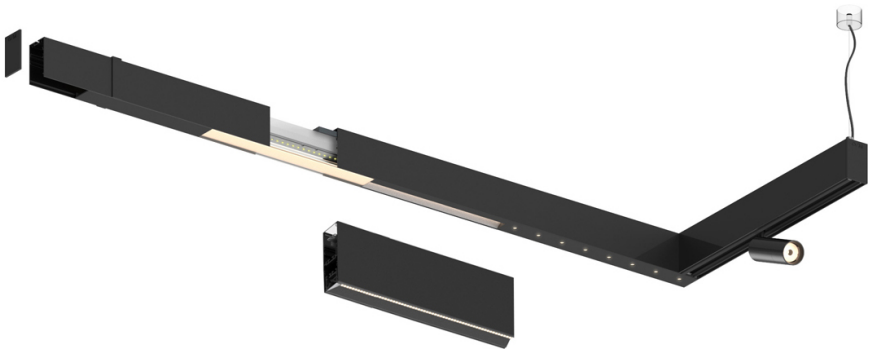


Design: O/M + Bartenbach GmbH

LED CRI>90 / >50.000h, L80/B10 / 2-step MacAdam
Power supply included.
IP20 | 230Vac | 50/60Hz



| LED | 4000K | Lichtquelle | Leuchte |
|-----------|-------|-------------|---------|
| Leistung | | 22W | 25W |
| Strom | | 3000lm | 2400lm |
| Effizienz | | 142lm/W | 97lm/W |
| LOR | | - | 0.8 |
| UGR | | - | <19 |



Abstrahlwinkel
Wide flood 80°

Anwendung

Gewicht



Ausführungen

- .01 Weiß / RAL 9010
- .02 Schwarz / RAL 9005

