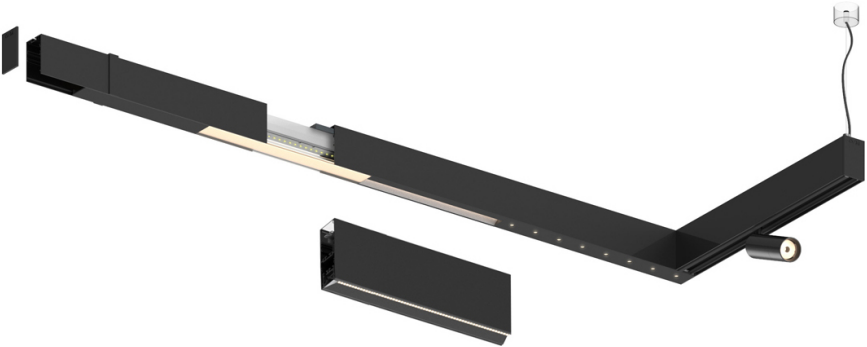
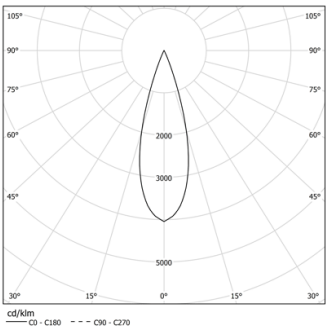


Design: O/M + Bartenbach GmbH

LED CRI>90 / >50.000h, L80/B10 / 2-step MacAdam
Power supply included.
IP20 | 230Vac | 50/60Hz



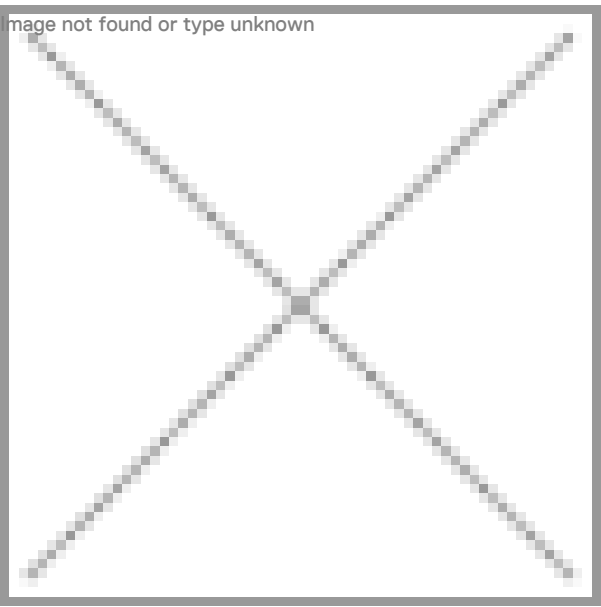
LED	2700K	Lichtquelle	Leuchte
Leistung		52W	64W
Strom		4800lm	3480lm
Effizienz		92lm/W	54lm/W
LOR		-	73%
UGR		-	<13



Abstrahlwinkel
Medium 30°

Anwendung

Gewicht



- Ausführungen
- .01 Weiß / RAL 9010
 - .02 Schwarz / RAL 9005