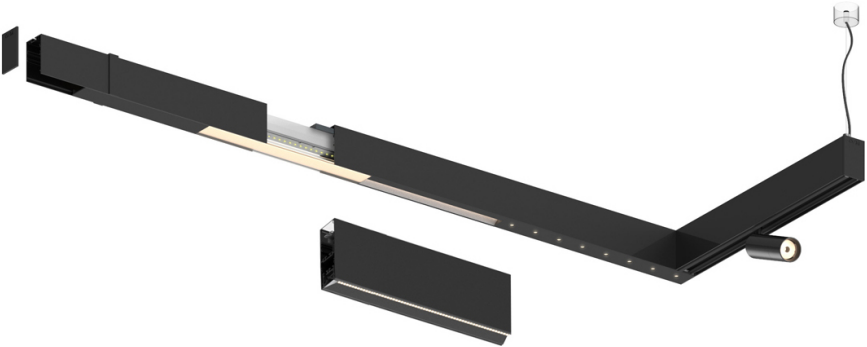



Design: O/M + Bartenbach GmbH

LED CRI>90 / >50.000h, L80/B10 / 2-step MacAdam
Power supply included.
IP20 | 230Vac | 50/60Hz



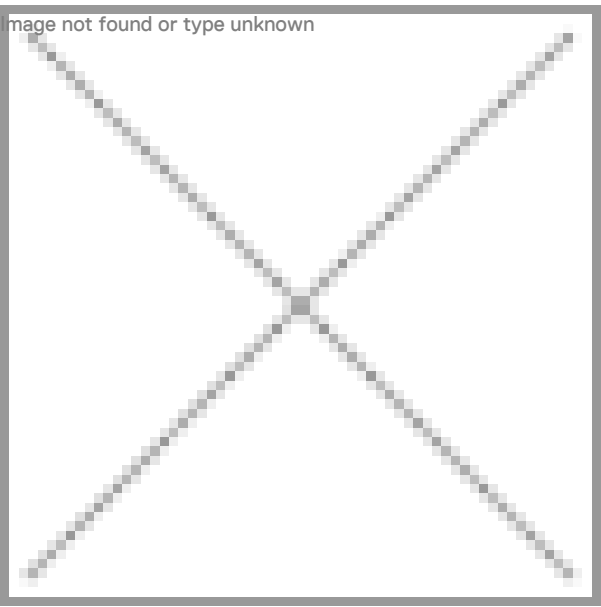
 2700K	Lichtquelle	Leuchte
Leistung	27W	32W
Strom	2400lm	1840lm
Effizienz	89lm/W	58lm/W
LOR	-	77%
UGR	-	<10



Abstrahlwinkel
Flood 50°

Anwendung

Gewicht



Ausführungen

○ .01 Weiß / RAL 9010

● .02 Schwarz / RAL 9005