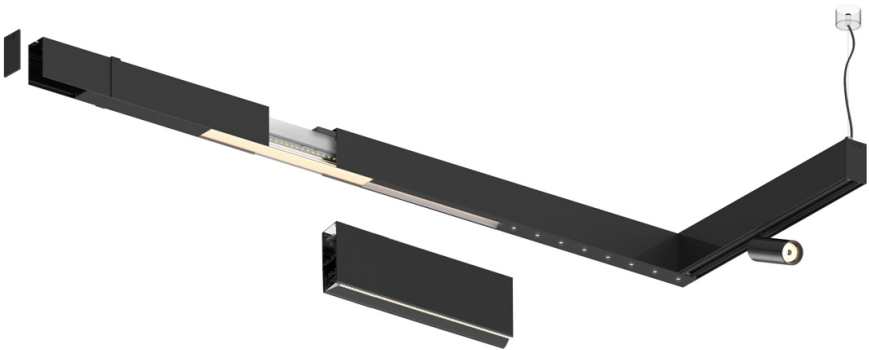
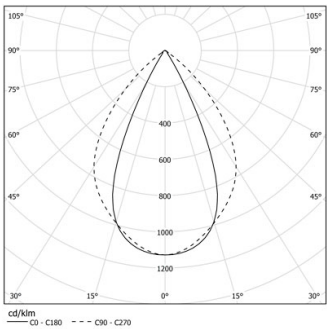


Design: O/M + Bartenbach GmbH

LED CRI>90 / >50.000h, L80/B10 / 2-step MacAdam
Power supply included.
IP20 | 230Vac | 50/60Hz



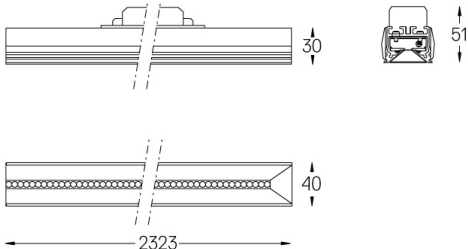
LED	4000K	Lichtquelle	Leuchte
Leistung		27W	32W
Strom		3600lm	2880lm
Effizienz		136lm/W	92lm/W
LOR		-	0.8
UGR		-	<19



Abstrahlwinkel
Wide flood 80°

Anwendung

Gewicht



Ausführungen

- .01 Weiß / RAL 9010
- .02 Schwarz / RAL 9005