

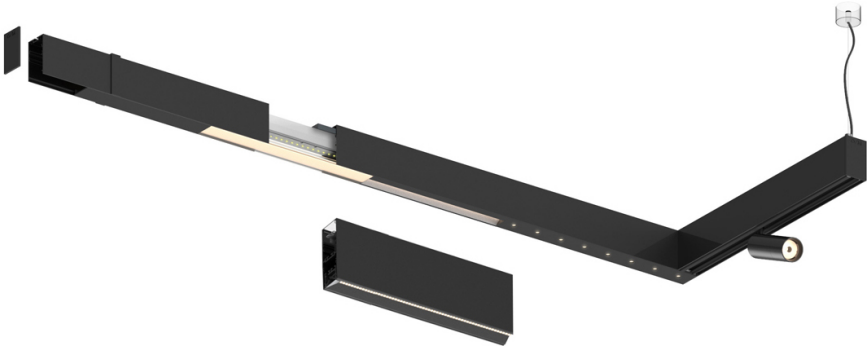



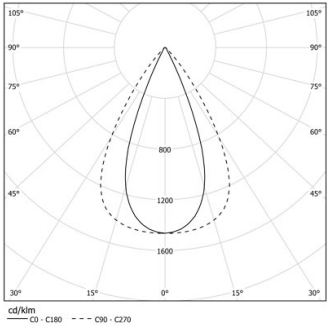
Design: O/M + Bartenbach GmbH

LED CRI>90 / >50.000h, L80/B10 / 2-step MacAdam
Power supply included.
IP20 | 230Vac | 50/60Hz



	3000K	Lichtquelle	Leuchte
Leistung	27W		32W
Strom	3360lm		2720lm
Effizienz	127lm/W		87lm/W
LOR	-		0.8100000000000001
UGR	-		<13



Abstrahlwinkel
Flood 65°

Anwendung

Gewicht



- Ausführungen
- ☐ .01 Weiß / RAL 9010
 - ☒ .02 Schwarz / RAL 9005

