

3,4W / 230lm / 2700K / DALI / Flood 52° /
150mm

60040



Design: O/M + Bartenbach GmbH

Luminaire with housing of aluminium profile with electrostatic 100% polyester paint with textured-finish.
Focal-lens with complex surface and individual complex surface rips to provide a focal point through an aperture for glare free area illumination.
Special springs available on request.

LED CRI>90 / >50.000h, L80/B10 / 2-step MacAdam
Power supply included.
IP20 | 230Vac | 50/60Hz



LED	2700K	Light Source	Luminaire
Power		3,4W	4,4W
Flux		300lm	230lm
Efficiency		88lm/W	53lm/W
LOR		-	77%
UGR		-	<13

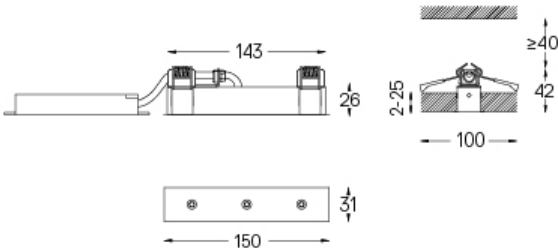


Beam angle
Flood 52°

Application



Weight
0,22Kg



Finishes

- .01 White / RAL 9010
- .02 Black / RAL 9005

For the specific supply of "DALI 2" drivers, please contact:
support@om-light.com

The cutout dimensions are for plasterboard ceilings. For other type of material please contact: support@om-light.com

Data according to regulations
2019/2020/EU supplemented by 2021/341 | 2019/2015/EU
supplemented by 2021/340/EU Energy Consumption Labelling
Ordinance. This product contains a light source of efficiency class F
Model Identifier 4053560262L