

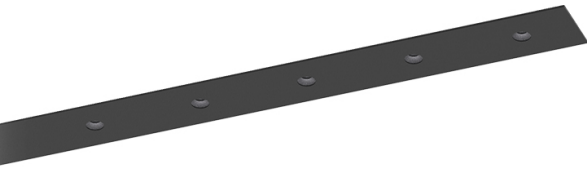
Design: O/M + Bartenbach GmbH

Luminaire with housing of aluminium profile with electrostatic 100% polyester paint with textured-finish.

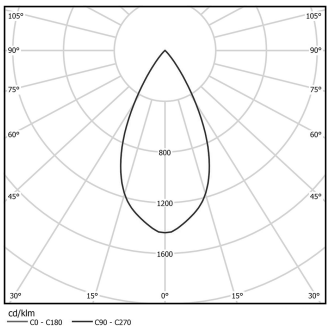
Focal-lens with complex surface and individual complex surface rips to provide a focal point through an aperture for glare free area illumination.

Special springs available on request.

LED CRI>90 / >50.000h, L80/B10 / 2-step MacAdam
Power supply included.
IP20 | 230Vac | 50/60Hz



LED	3000K	Light Source	Luminaire
Power		14W	17,1W
Flux		1290lm	980lm
Efficiency		92lm/W	57lm/W
LOR		-	76%
UGR		-	<13

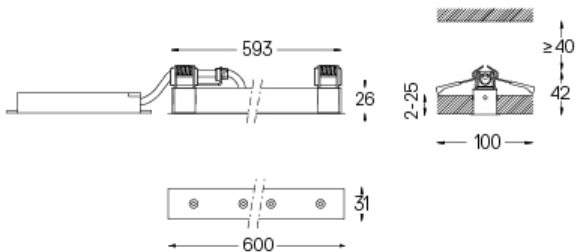


Beam angle
Flood 52°

Application



Weight
0,5Kg



Finishes

- .01 White / RAL 9010
- .02 Black / RAL 9005

For the specific supply of "DALI 2" drivers, please contact:
support@om-light.com

The cutout dimensions are for plasterboard ceilings. For other type of material please contact: support@om-light.com

Data according to regulations
2019/2020/EU supplemented by 2021/341 |2019/2015/EU
supplemented by 2021/340/EU Energy Consumption Labelling
Ordinance. This product contains light sources of efficiency class E
Model Identifier 4053560343L