

9,8W / 700lm / 2700K / DALI / Medium 41° /  
ø86mm

60273



Design: O/M + Bartenbach GmbH

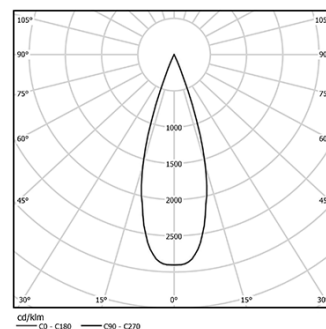
Track-mounted spotlight with die-cast aluminium body with electrostatic 100% polyester paint finish. Spot-lens with individual complex surface ribs to provide a focal light and an extremely narrow beam. Orientable by 90° horizontal rotation and 330° vertical rotation.

Power supply incorporated.

LED CRI>90 / >50.000h, L80/B10  
2-step MacAdam / Power supply included.  
IP20 | 230Vac | 50/60Hz



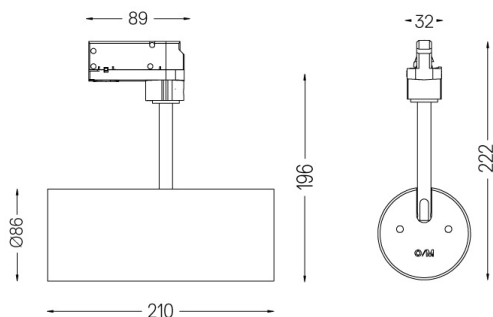
LED	2700K	Light Source	Luminaire
Power		9,8W	12,3W
Flux		955lm	700lm
Efficiency		97lm/W	57lm/W
LOR		-	73%
UGR		-	230Vac



Beam angle  
Medium 41°

Application

Weight  
0,64Kg



#### Finishes

- .01 White / RAL 9010
- .02 Black / RAL 9005