

4,5W / 470lm / 3000K / DALI / Flood 59° /
ø86mm

60282



Design: O/M + Bartenbach GmbH

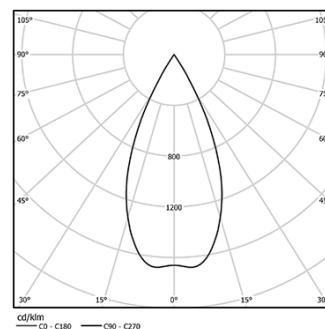
Track-mounted spotlight with die-cast aluminium body with electrostatic 100% polyester paint finish. Spot-lens with individual complex surface rips to provide a focal light and an extremely narrow beam. Orientable by 90° horizontal rotation and 330° vertical rotation.

Power supply incorporated.

LED CRI>90 / >50.000h, L80/B10
2-step MacAdam / Power supply included.
IP20 | 230Vac | 50/60Hz



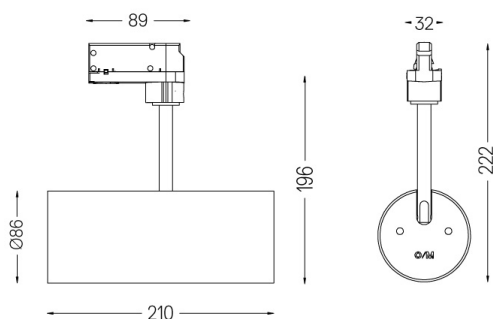
LED	3000K	Light Source	Luminaire
Power		4,5W	5,8W
Flux		520lm	470lm
Efficiency		116lm/W	81lm/W
LOR		-	90%
UGR		-	230Vac



Beam angle
Flood 59°

Application

Weight
0,64Kg



Finishes

- .01 White / RAL 9010
- .02 Black / RAL 9005