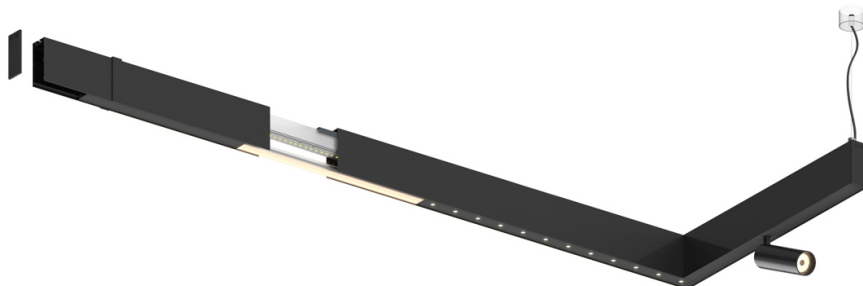


27W / 1760lm / 2700K / DALI / Medium 30° /
1200mm

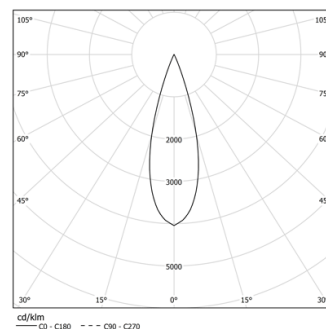
60946

Design: O/M + Bartenbach GmbH
inVision module with housing and perforated cover
plate made of aluminium with textured-paint finish.

LED CRI>90 / >50.000h, L80/B10 / 2-step MacAdam
Power supply included.
IP20 | 230Vac | 50/60Hz



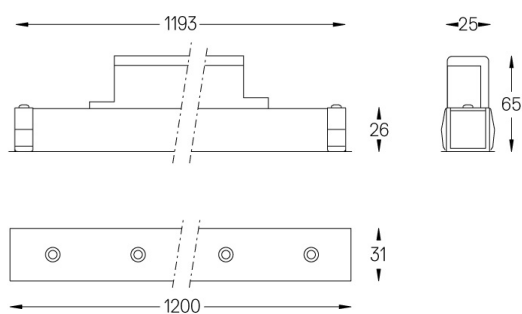
| LED | 2700K | Light Source | Luminaire |
|------------|--------|--------------|--------------------|
| Power | 27W | | 32W |
| Flux | 2400lm | | 1760lm |
| Efficiency | 89lm/W | | 55lm/W |
| LOR | - | | 0.7333333333333333 |
| UGR | - | | <10 |



Beam angle
Medium 30°

Application

Weight
0,8Kg



Finishes

- .01 White / RAL 9010
- .02 Black / RAL 9005

For the specific supply of "DALI 2" drivers, please contact:
support@om-light.com

Choose the length and layout of the system exactly as you want it, to
model the right lighting functions for different tasks. For further
information please contact: support@om-light.com