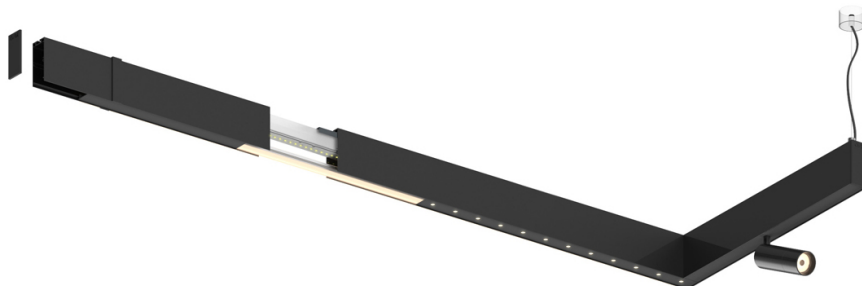


27W / 1840lm / 2700K / DALI / Flood 50° /
1200mm

60948

Design: O/M + Bartenbach GmbH
inVision module with housing and perforated cover
plate made of aluminium with textured-paint finish.

LED CRI>90 / >50.000h, L80/B10 / 2-step MacAdam
Power supply included.
IP20 | 230Vac | 50/60Hz



LED	2700K	Light Source	Luminaire
Power	27W		32W
Flux	2400lm		1840lm
Efficiency	89lm/W		58lm/W
LOR	-		0.766666666666667
UGR	-		<10



Beam angle
Flood 50°

Application

Weight
0,8Kg



Finishes

- .01 White / RAL 9010
- .02 Black / RAL 9005

For the specific supply of "DALI 2" drivers, please contact:
support@om-light.com

Choose the length and layout of the system exactly as you want it, to
model the right lighting functions for different tasks. For further
information please contact: support@om-light.com