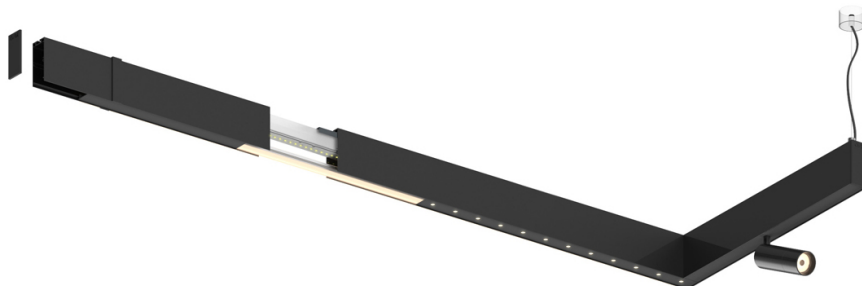


14W / 940lm / 3000K / DALI / Medium 30° /  
600mm

60958

Design: O/M + Bartenbach GmbH  
inVision module with housing and perforated cover  
plate made of aluminium with textured-paint finish.

LED CRI>90 / >50.000h, L80/B10 / 2-step MacAdam  
Power supply included.  
IP20 | 230Vac | 50/60Hz



LED	3000K	Light Source	Luminaire
Power		14W	16W
Flux		1290lm	940lm
Efficiency		92lm/W	59lm/W
LOR		-	0.7286821705426356
UGR		-	<10



Beam angle  
Medium 30°

Application

Weight  
0,5Kg



### Finishes

- .01 White / RAL 9010
- .02 Black / RAL 9005

For the specific supply of "DALI 2" drivers, please contact:  
support@om-light.com

Choose the length and layout of the system exactly as you want it, to  
model the right lighting functions for different tasks. For further  
information please contact: support@om-light.com