

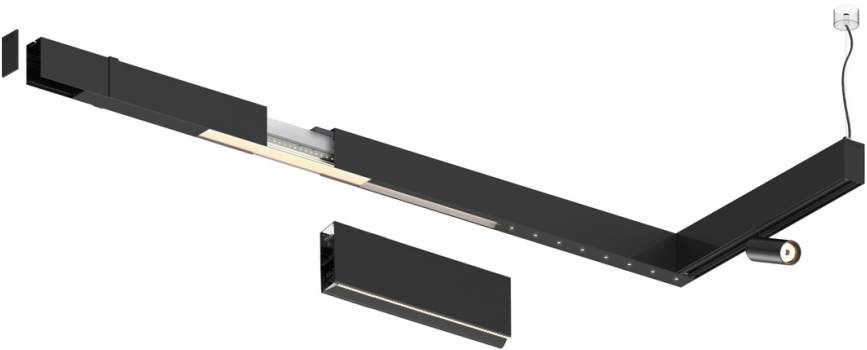
28W / 3120lm / 4000K / DALI / Flood 65° /
1747mm

61184

Compatibility with other modules must be confirmed
with support@om-light.com

Design: OM + Bartenbach
GmbH
Module with linear extruded lenses (Lightstream)
combined with a secondary reflector, integrated into
an extruded aluminium profile.

LED CRI>90 / >50.000h, L80/B10 / 2-step MacAdam
Power supply included.
IP20 | 230Vac | 50/60Hz



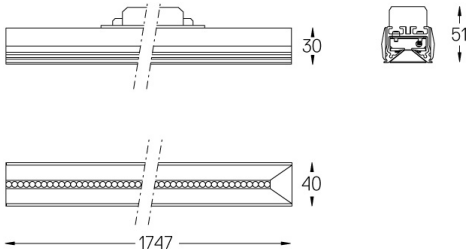
LED	4000K	Light Source	Luminaire
Power		28W	33W
Flux		3900lm	3120lm
Efficiency		141lm/W	96lm/W
LOR		-	0.8
UGR		-	<16



Beam angle
Flood 65°

Application

Weight



Finishes
○ .01 White / RAL 9010
● .02 Black / RAL 9005

For the specific supply of "DALI 2" drivers, please contact:
support@om-light.com

Choose the length and layout of the system exactly as you want it, to
model the right lighting functions for different tasks. For further
information please contact: support@om-light.com