

Compatibility with other modules must be confirmed with [support@om-light.com](mailto:support@om-light.com)

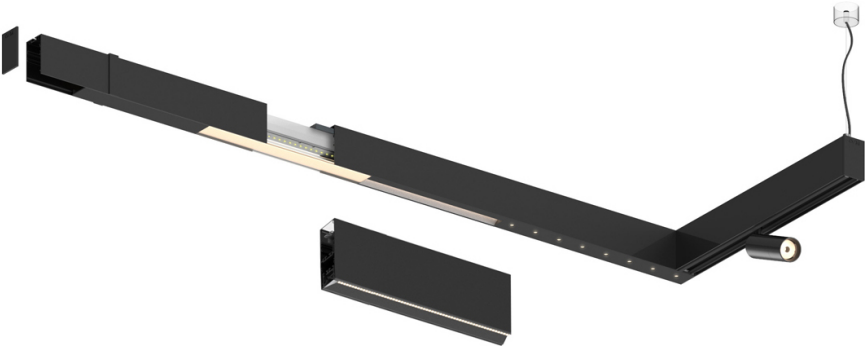
Design: OM + Bartenbach GmbH


Module with linear extruded lenses (Lightstream) combined with a secondary reflector, integrated into an extruded aluminium profile.

LED CRI>80 / >50.000h, L80/B10 / 2-step MacAdam

Power supply included.

IP20 | 230Vac | 50/60Hz



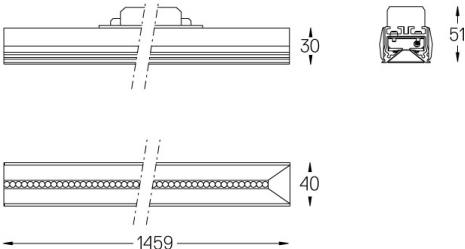
 LED	2200K-5000K	Light Source	Luminaire
Power	28W *	33W *	
Flux	3650lm *	2900lm *	
Efficiency	120lm/W	85lm/W	
LOR	-	0.8273381294964028	
UGR	-	<13	



Beam angle  
Flood 65°

Application

Weight



- Finishes
- .01 White / RAL 9010
  - .02 Black / RAL 9005

For the specific supply of "DALI 2" drivers, please contact: [support@om-light.com](mailto:support@om-light.com)

Choose the length and layout of the system exactly as you want it, to model the right lighting functions for different tasks. For further information please contact: [support@om-light.com](mailto:support@om-light.com)