

Sys45 inFinit module

**14W / 1360lm / 3000K / DALI / Wide flood
80° / 1152mm**

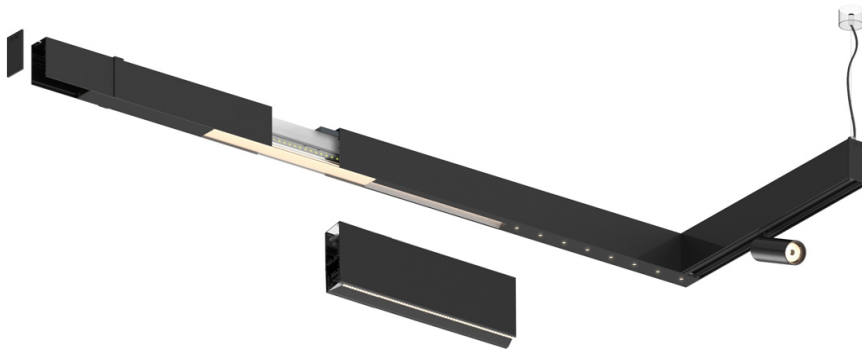
61205


Compatibility with other modules must be confirmed
with support@om-light.com

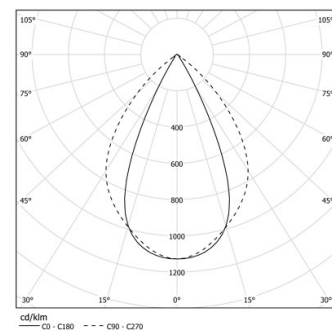
Design: OM + Bartenbach
GmbH

Module with linear extruded lenses (Lightstream) combined with a secondary reflector, integrated into an extruded aluminium profile.

LED CRI>90 / >50.000h, L80/B10 / 2-step MacAdam
Power supply included.
IP20 | 230Vac | 50/60Hz



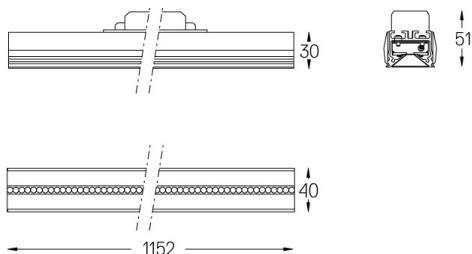
 LED	3000K	Light Source	Luminaire
Power	14W	16W	
Flux	1680lm	1360lm	
Efficiency	127lm/W	87lm/W	
LOR	-	0.8100000000000001	
UGR	-	<19	



Beam angle
Wide flood 80°

Application

Weight



Finishes

- ☐ **.01 White / RAL 9010**
☒ **.02 Black / RAL 9005**

For the specific supply of "DALI 2" drivers, please contact:
support@om-light.com

Choose the length and layout of the system exactly as you want it, to model the right lighting functions for different tasks. For further information please contact: support@om-light.com