

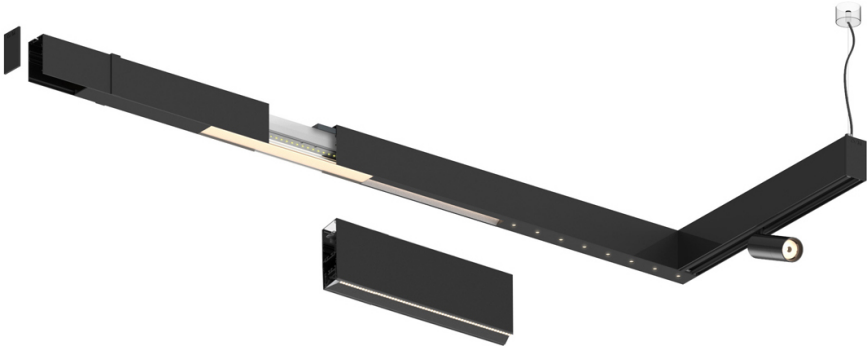
16W\* / 710lm\* / 2200K-5000K / DALI /  
Asymmetric / 600mm

61255

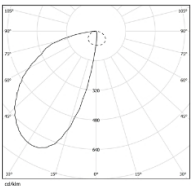
Compatibility with other modules must be confirmed  
with [support@om-light.com](mailto:support@om-light.com)

Design: O/M + Bartenbach GmbH  
LED light source with excellent colour consistency  
and long operation lifespan. LED light source in  
Tunable White.  
Asymmetrical aluminium reflector.

LED CRI>80 / >50.000h, L80/B10  
2-step MacAdam / power supply included.  
DALI DT8  
IP20 | 230Vac | 50/60Hz



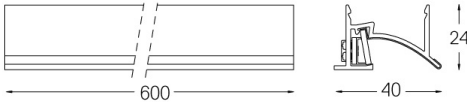
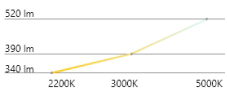
LED	2200K-5000K	Light Source	Luminaire
Power		16W*	19W*
Flux		1550lm*	710lm*
Efficiency		97lm/W	37lm/W
LOR		-	46%
UGR		-	-



Beam angle  
Asymmetric

Application

Weight



### Finishes

- .01 White / RAL 9010
- .02 Black / RAL 9005
- .03 Grey / RAL 9006

Choose the length and layout of the system exactly as you want it, to  
model the right lighting functions for different tasks. For further  
information please contact: [support@om-light.com](mailto:support@om-light.com)  
DALI DT8 driver