

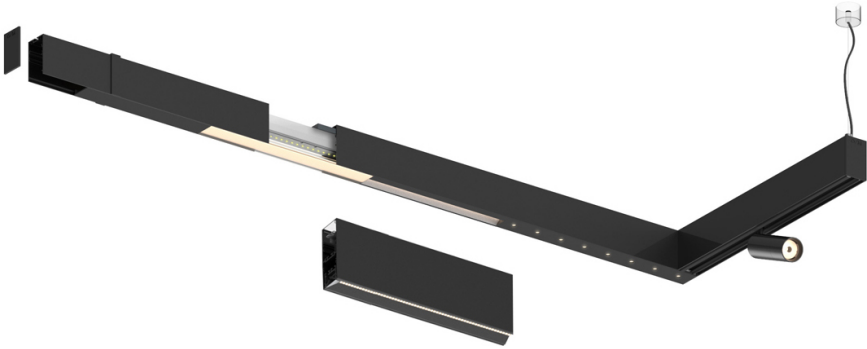
Sys45 inVision module


52W / 3480lm / 2700K / DALI / Medium 30° /
1200mm

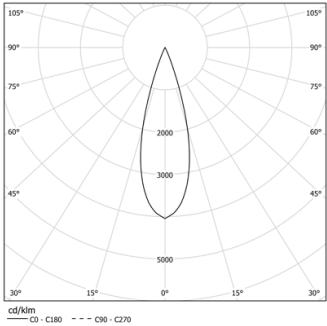
61270

Design: O/M + Bartenbach GmbH
inVision module to Sys45 system with housing and
perforated cover plate made of aluminium with
textured-paint finish.

LED CRI>90 / >50.000h, L80/B10 / 2-step MacAdam
Power supply included.
IP20 | 230Vac | 50/60Hz



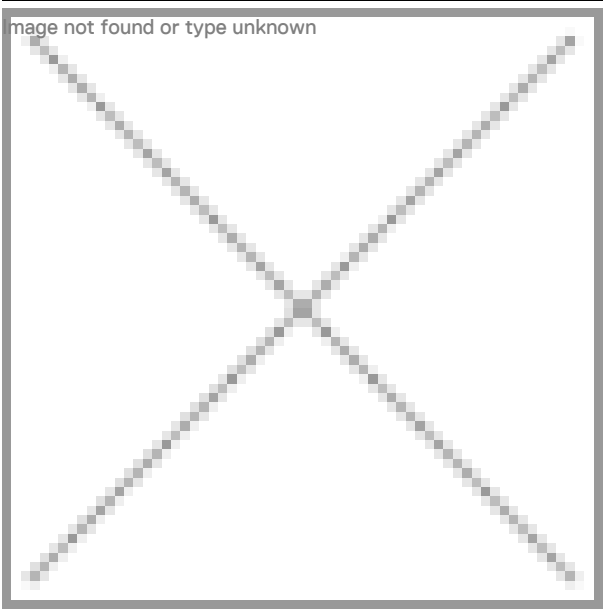
 2700K	Light Source	Luminaire
Power	52W	64W
Flux	4800lm	3480lm
Efficiency	92lm/W	54lm/W
LOR	-	73%
UGR	-	<13



Beam angle
Medium 30°

Application

Weight



Finishes

- .01 White / RAL 9010
- .02 Black / RAL 9005

Choose the length and layout of the system exactly as you want it, to
model the right lighting functions for different tasks. For further
information please contact: support@om-light.com
For the specific supply of "DALI 2" drivers, please contact:
support@om-light.com