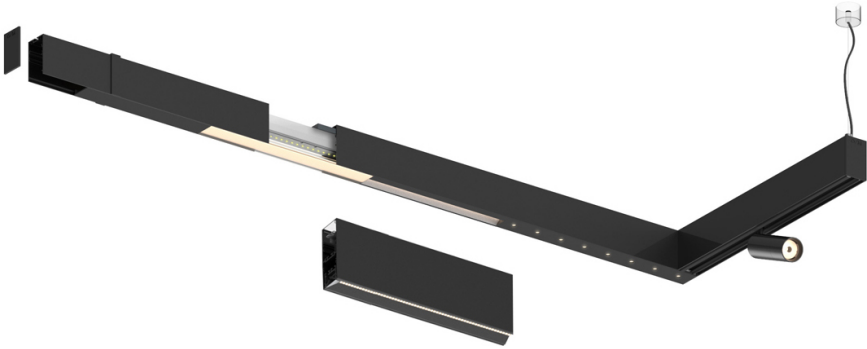
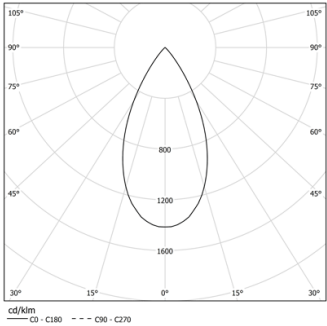


Design: O/M + Bartenbach GmbH  
inVision module to Sys45 system with housing and  
perforated cover plate made of aluminium with  
textured-paint finish.

LED CRI>90 / >50.000h, L80/B10 / 2-step MacAdam  
Power supply included.  
IP20 | 230Vac | 50/60Hz



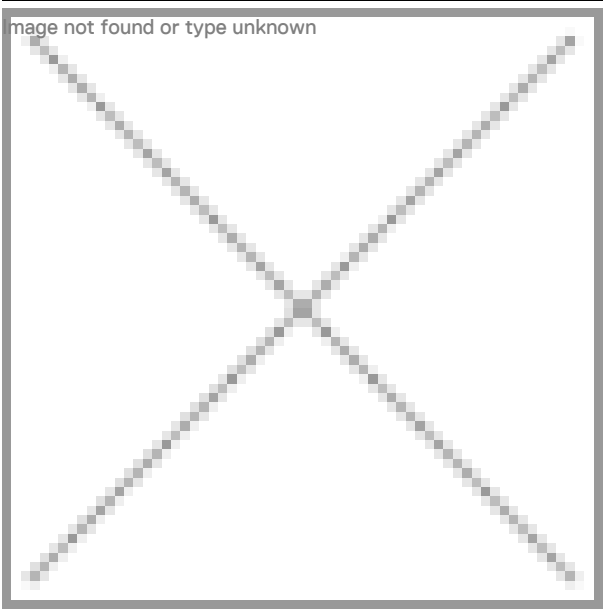
LED	2700K	Light Source	Luminaire
Power		52W	64W
Flux		4800lm	3640lm
Efficiency		92lm/W	57lm/W
LOR		-	76%
UGR		-	<16



Beam angle  
Flood 50°

Application

Weight



### Finishes

- .01 White / RAL 9010
- .02 Black / RAL 9005

Choose the length and layout of the system exactly as you want it, to  
model the right lighting functions for different tasks. For further  
information please contact: [support@om-light.com](mailto:support@om-light.com)  
For the specific supply of "DALI 2" drivers, please contact:  
[support@om-light.com](mailto:support@om-light.com)