

10W / 980lm / 3000K / DALI / Spot 12° /  
ø45x123mm

61404

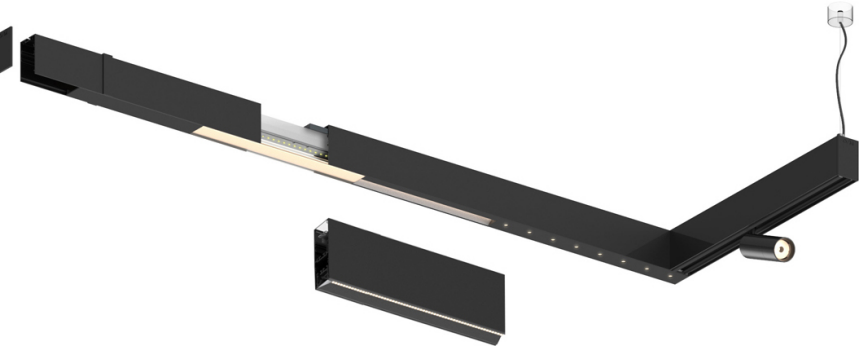
Design: O/M

Adjustable spotlight with aluminium body for  
installation on Sys45 systems.

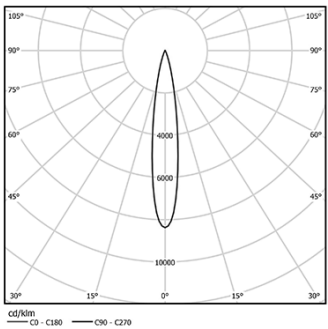
The spotlight can be rotated up to 90° horizontally  
and 330° vertically.

Accessories available separately and easily applicable  
after installation.

LED CRI>80 / >50.000h, L80/B10  
2-step MacAdam / power supply included.  
IP20 | 230Vac | 50/60Hz



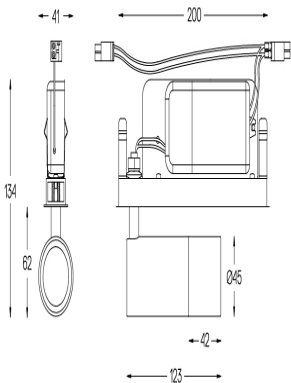
| LED        | 3000K | Light Source | Luminaire |
|------------|-------|--------------|-----------|
| Power      |       | 10W          | 12W       |
| Flux       |       | 1190lm       | 980lm     |
| Efficiency |       | 119lm/W      | 82lm/W    |
| LOR        |       | -            | 82%       |
| UGR        |       | -            | -         |



Beam angle  
Spot 12°

Application

Weight



Finishes

- .01 White / RAL 9010
- .02 Black / RAL 9005

Ordered separately

**59016** Elliptical refractor

Ø39x0,5mm

**59017** Soft diffuser

Ø39x0,5mm

**59018** Louvre

Ø39x3mm

**59019** Snoot 72mm

Ø45x72

Choose the length and layout of the system exactly as you want it, to  
model the right lighting functions for different tasks. For further  
information please contact: [support@om-light.com](mailto:support@om-light.com)

For the specific supply of "DALI 2" drivers, please contact:  
[support@om-light.com](mailto:support@om-light.com)