

10W / 870lm / 3000K / DALI / Medium 28° /
ø45x123mm

61405

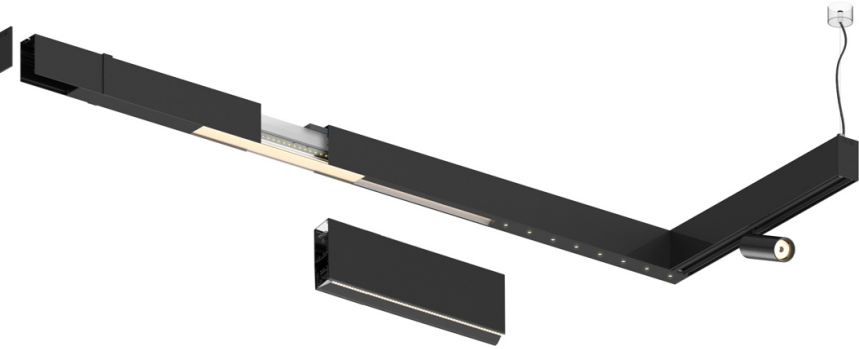
Design: O/M

Adjustable spotlight with aluminium body for
installation on Sys45 systems.

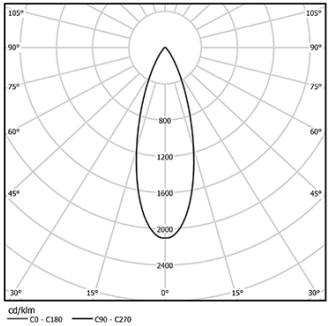
The spotlight can be rotated up to 90° horizontally
and 330° vertically.

Accessories available separately and easily applicable
after installation.

LED CRI>80 / >50.000h, L80/B10
2-step MacAdam / power supply included.
IP20 | 230Vac | 50/60Hz



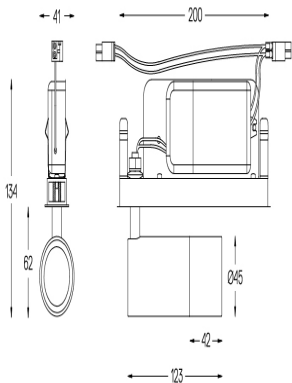
LED	3000K	Light Source	Luminaire
Power	10W		12W
Flux	1190lm		870lm
Efficiency	119lm/W		73lm/W
LOR	-		73%
UGR	-		-



Beam angle
Medium 28°

Application

Weight



Finishes

- .01 White / RAL 9010
- .02 Black / RAL 9005

Ordered separately

59016 Elliptical refractor

Ø39x0,5mm

59017 Soft diffuser

Ø39x0,5mm

59018 Louvre

Ø39x3mm

59019 Snoot 72mm

Ø45x72

Choose the length and layout of the system exactly as you want it, to
model the right lighting functions for different tasks. For further
information please contact: support@om-light.com

For the specific supply of "DALI 2" drivers, please contact:
support@om-light.com