

Sys45 Onit module

10W / 1020lm / 4000K / DALI / Spot 12° /
ø45x123mm

61408

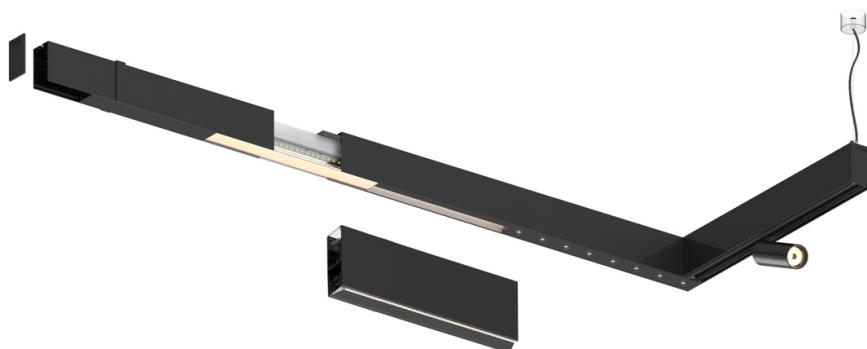
Design: O/M

Adjustable spotlight with aluminium body for
installation on Sys45 systems.

The spotlight can be rotated up to 90° horizontally
and 330° vertically.

Accessories available separately and easily applicable
after installation.

LED CRI>80 / >50.000h, L80/B10
2-step MacAdam / power supply included.
IP20 | 230Vac | 50/60Hz



LED	4000K	Light Source	Luminaire
Power		10W	12W
Flux		1240lm	1020lm
Efficiency		124lm/W	85lm/W
LOR		-	82%
UGR		-	-



Beam angle
Spot 12°

Application

Weight



Finishes

- .01 White / RAL 9010
- .02 Black / RAL 9005

Ordered separately

59016 Elliptical refractor

Ø39x0,5mm

59017 Soft diffuser

Ø39x0,5mm

59018 Louvre

Ø39x3mm

59019 Snoot 72mm

Ø45x72

Choose the length and layout of the system exactly as you want it, to
model the right lighting functions for different tasks. For further
information please contact: support@om-light.com

For the specific supply of "DALI 2" drivers, please contact:
support@om-light.com