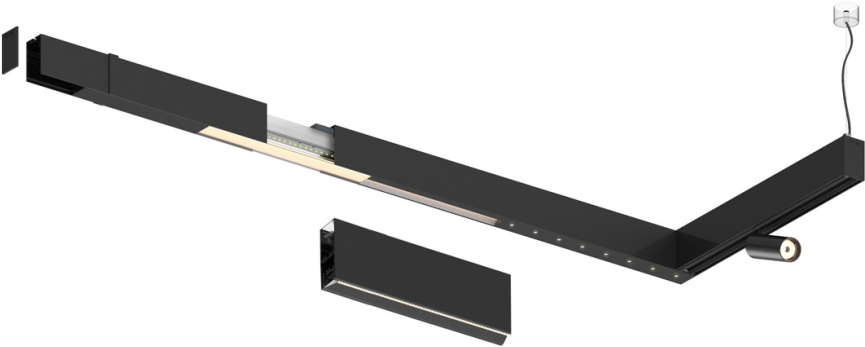


Design: O/M  
Indirect module to Sys45 system with Linear lenses  
for batwing effect. Protected by a clear  
polycarbonate diffuser. ordered separately.

LED CRI>80 / >50.000h, L80/B10  
3-step MacAdam / power supply included.  
IP20 | 230Vac | 50/60Hz



LED	3000K	Light Source	Luminaire
Power		4,2W	5W
Flux		550lm	350lm
Efficiency		131lm/W	70lm/W
LOR		-	64%
UGR		-	-



Beam angle  
Diffuse

Application

Weight

Finishes

Choose the length and layout of the system exactly as you want it, to  
model the right lighting functions for different tasks. For further  
information please contact: support@om-light.com

