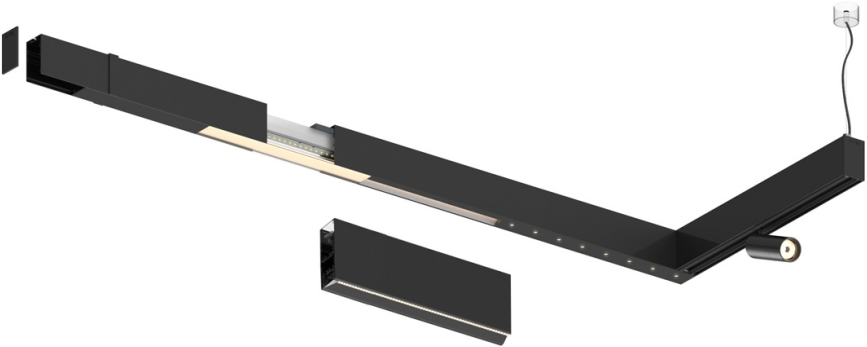



Design: O/M
Indirect module to Sys45 system with Linear lenses
for batwing effect. Protected by a clear
polycarbonate diffuser. ordered separately.

LED CRI>80 / >50.000h, L80/B10
3-step MacAdam / power supply included.
IP20 | 230Vac | 50/60Hz



| | | |
|---|--------------|-----------|
|  3000K | Light Source | Luminaire |
| Power | 30W | 36W |
| Flux | 3300lm | 2070lm |
| Efficiency | 111lm/W | 58lm/W |
| LOR | - | 63% |
| UGR | - | - |



Beam angle
Diffuse

Application

Weight

Finishes

Choose the length and layout of the system exactly as you want it, to
model the right lighting functions for different tasks. For further
information please contact: support@om-light.com

