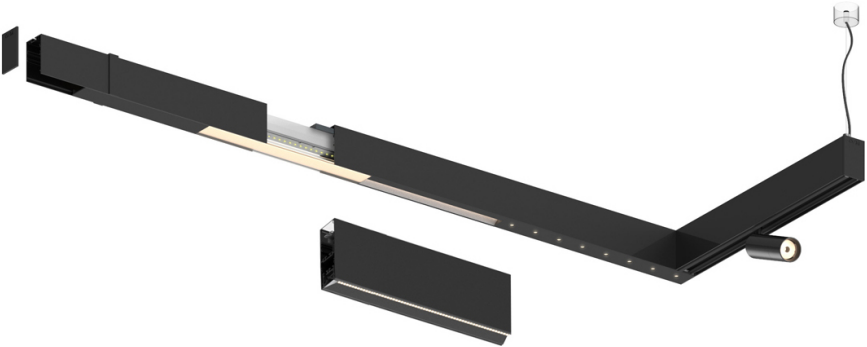


Design: O/M
Indirect module to Sys45 system with Linear lenses
for batwing effect. Protected by a clear
polycarbonate diffuser. ordered separately.

LED CRI>80 / >50.000h, L80/B10
3-step MacAdam / power supply included.
IP20 | 230Vac | 50/60Hz



LED	3000K	Light Source	Luminaire
Power		30W	36W
Flux		3300lm	2070lm
Efficiency		111lm/W	58lm/W
LOR		-	63%
UGR		-	-



Beam angle
Diffuse

Application

Weight

Finishes

Choose the length and layout of the system exactly as you want it, to
model the right lighting functions for different tasks. For further
information please contact: support@om-light.com

