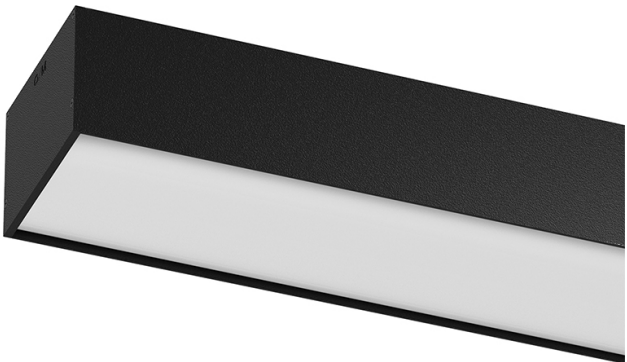


U120
Surface/Pendant

95W / 7000lm / 3000K / On/Off / Diffuse /
2891mm

62030



Design: Eduardo Souto de Moura

Surface or pendant luminaire with housing made of aluminium profile with 25micron maximum corrosion resistance anodization with matt finish or with textured electrostatic 100% polyester paint.

Frosted polycarbonate diffuser with user friendly clipping system and double fitting system: flushed or recessed.

Aluminium anodised end caps with matt finish or electrostatic 100% polyester paint with textured-finish.

Fitting accessories ordered separately.

LED CRI>80 / >50.000h, L80/B10 / 3-step MacAdam

Power supply included.

IP40 | 230Vac | 50/60Hz



| LED | 3000K | Light Source | Luminaire |
|------------|-------|--------------|-----------|
| Power | | 95W | 109W |
| Flux | | 11300lm | 7000lm |
| Efficiency | | 119lm/W | 64lm/W |
| LOR | | - | 62% |
| UGR | | - | <25 |



Beam angle
Diffuse

Application



Weight
12,9Kg



- Finishes
- .01 White / RAL 9010
 - .02 Black / RAL 9005
 - .10 Anodised aluminium

Mandatory

54036 Pendant direct fitting acessory

54034 Clear Base

ø60x35mm

Data according to regulations

2019/2020/EU supplemented by 2021/341 |2019/2015/EU supplemented by 2021/340/EU Energy Consumption Labelling Ordinance. This product contains light sources of efficiency class D

Model Identifier WU-M-526-S-BC-830, WU-M-536-S-BC-830