

Compatibility with other modules must be confirmed with [support@om-light.com](mailto:support@om-light.com)



Design: OM + Bartenbach GmbH

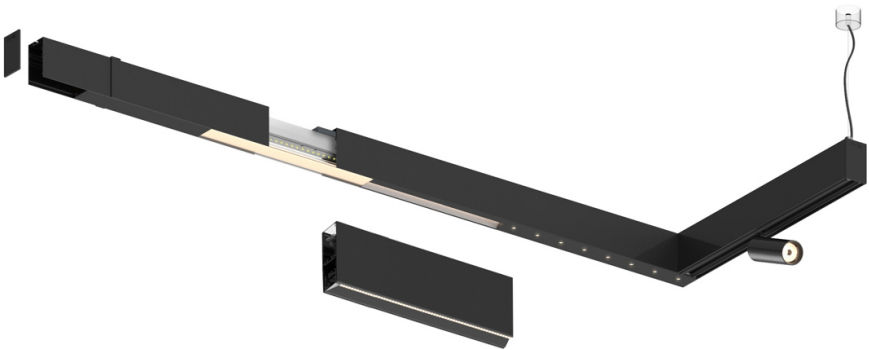
Module with linear extruded lenses (Lightstream) combined with a secondary reflector, integrated into an extruded aluminium profile.


LED CRI>90 / >50.000h, L80/B10 / 2-step MacAdam

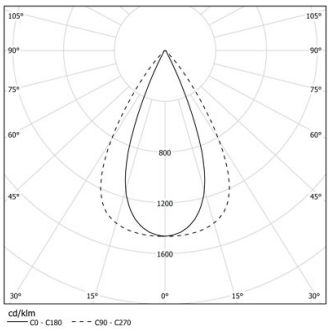
Power supply included.

IP20 | 230Vac | 50/60Hz



 3000K	Light Source	Luminaire
Power	27W	32W
Flux	3360lm	2720lm
Efficiency	127lm/W	87lm/W
LOR	-	0.8100000000000001
UGR	-	<13

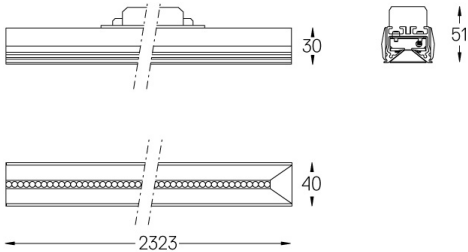


Beam angle  
Flood 65°

Application

Weight

 mm



Finishes

 .01 White / RAL 9010

 .02 Black / RAL 9005

For the specific supply of "DALI 2" drivers, please contact: [support@om-light.com](mailto:support@om-light.com)

Choose the length and layout of the system exactly as you want it, to model the right lighting functions for different tasks. For further information please contact: [support@om-light.com](mailto:support@om-light.com)