

Compatibility with other modules must be confirmed with [support@om-light.com](mailto:support@om-light.com)

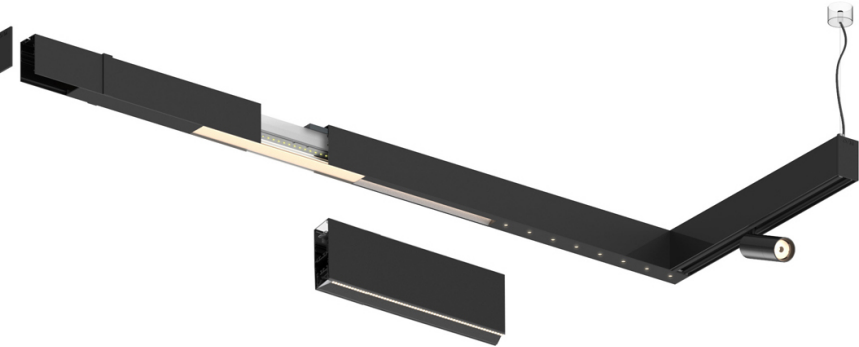
Design: OM + Bartenbach GmbH


Module with linear extruded lenses (Lightstream) combined with a secondary reflector, integrated into an extruded aluminium profile.

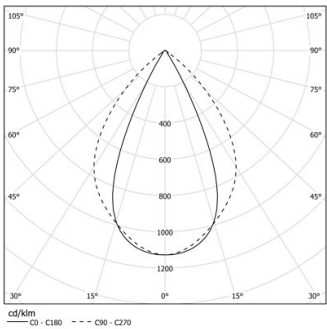
LED CRI>90 / >50.000h, L80/B10 / 2-step MacAdam

Power supply included.

IP20 | 230Vac | 50/60Hz



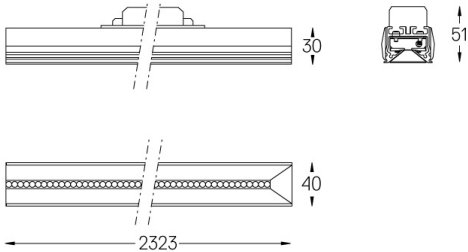
 <b>4000K</b>	<b>Light Source</b>	<b>Luminaire</b>
<b>Power</b>	<b>27W</b>	<b>32W</b>
<b>Flux</b>	<b>3600lm</b>	<b>2880lm</b>
<b>Efficiency</b>	<b>136lm/W</b>	<b>92lm/W</b>
<b>LOR</b>	<b>-</b>	<b>0.8</b>
<b>UGR</b>	<b>-</b>	<b>&lt;19</b>



Beam angle  
**Wide flood 80°**

Application

Weight



Finishes

○ .01 White / RAL 9010

● .02 Black / RAL 9005

For the specific supply of "DALI 2" drivers, please contact: [support@om-light.com](mailto:support@om-light.com)

Choose the length and layout of the system exactly as you want it, to model the right lighting functions for different tasks. For further information please contact: [support@om-light.com](mailto:support@om-light.com)