

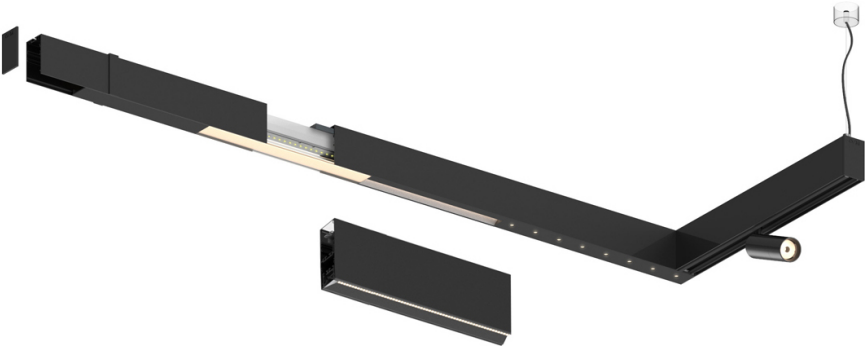
33W / 3600lm / 4000K / DALI / Flood 65° /
2899mm

63160

Compatibility with other modules must be confirmed
with support@om-light.com

Design: OM + Bartenbach
GmbH
Module with linear extruded lenses (Lightstream)
combined with a secondary reflector, integrated into
an extruded aluminium profile.

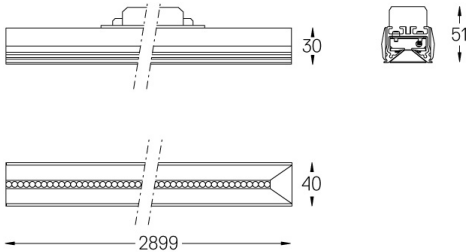
LED CRI>90 / >50.000h, L80/B10 / 2-step MacAdam
Power supply included.
IP20 | 230Vac | 50/60Hz



LED	4000K	Light Source	Luminaire
Power		33W	39W
Flux		4500lm	3600lm
Efficiency		136lm/W	92lm/W
LOR		-	0.8
UGR		-	<13



Beam angle
Flood 65°
Application
Weight



Finishes
○ .01 White / RAL 9010
● .02 Black / RAL 9005

For the specific supply of "DALI 2" drivers, please contact:
support@om-light.com
Choose the length and layout of the system exactly as you want it, to
model the right lighting functions for different tasks. For further
information please contact: support@om-light.com