

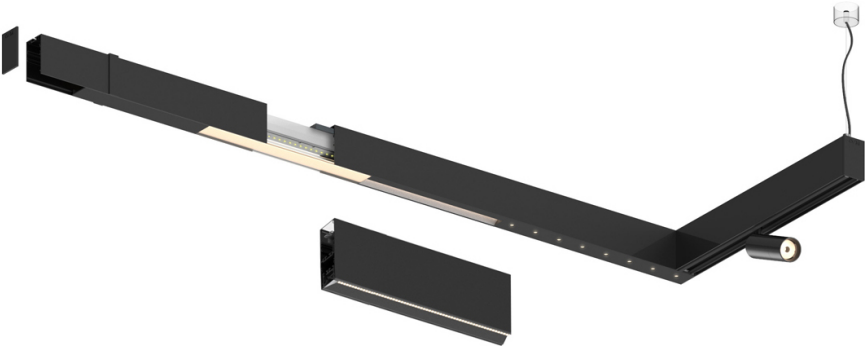
27W / 2720lm / 3000K / DALI / Wide flood
80° / 2304mm

63166

Compatibility with other modules must be confirmed
with support@om-light.com

Design: OM + Bartenbach
GmbH
Module with linear extruded lenses (Lightstream)
combined with a secondary reflector, integrated into
an extruded aluminium profile.

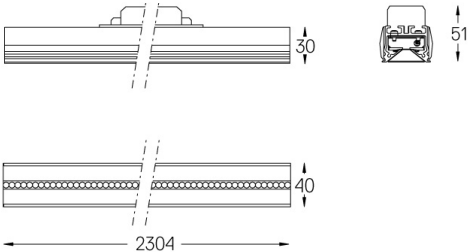
LED CRI>90 / >50.000h, L80/B10 / 2-step MacAdam
Power supply included.
IP20 | 230Vac | 50/60Hz



LED	3000K	Light Source	Luminaire
Power		27W	32W
Flux		3360lm	2720lm
Efficiency		127lm/W	87lm/W
LOR		-	0.8100000000000001
UGR		-	<19



Beam angle
Wide flood 80°
Application
Weight



- Finishes
- .01 White / RAL 9010
 - .02 Black / RAL 9005

For the specific supply of "DALI 2" drivers, please contact:
support@om-light.com
Choose the length and layout of the system exactly as you want it, to
model the right lighting functions for different tasks. For further
information please contact: support@om-light.com