

## Over Recessed

5,6W / 350lm / 2700K / On/Off / Medium  
41° / ø45mm

64448



Design: O/M + Bartenbach GmbH

Recessed spotlight with die-cast aluminium body with electrostatic 100% polyester paint finish.

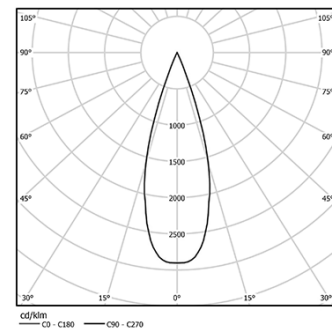
Spot-lens with individual complex surface rips to provide a focal light and an extremely narrow beam. Orientable by 150° horizontal rotation and 330° vertical rotation.

Driver included.

LED CRI>90 / >50.000h, L80/B10  
2-step MacAdam / Driver included.  
IP20 | 230Vac | 50/60Hz



LED	2700K	Light Source	Luminaire
Power		5,6W	7W
Flux		460lm	350lm
Efficiency		82lm/W	50lm/W
LOR		-	76%
Operating Condition		-	230Vac

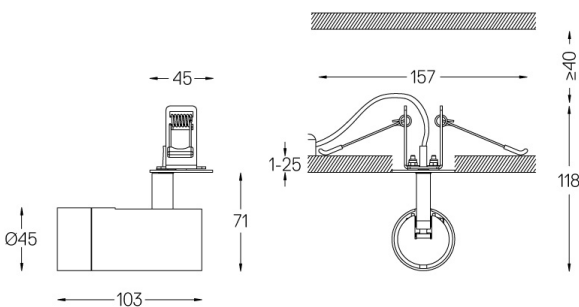


Beam angle  
Medium 41°

Application



Weight  
0,27Kg



Finishes

- .01 White / RAL 9010
- .02 Black / RAL 9005

Optional

59072 1/4 CTO

ø35x1,1mm

59073 1/2 CTO

ø35x1,1mm

59074 Louvre

ø35x2mm

59075 Soft diffuser

ø35x2mm

The cutout dimensions are for plasterboard ceilings. For other type of material please contact: support@om-light.com

Data according to regulations

2019/2020/EU supplemented by 2021/341 |2019/2015/EU  
supplemented by 2021/340/EU Energy Consumption Labelling  
Ordinance. This product contains a light source of efficiency class G  
Model Identifier 4053560312L