

5,6W / 200lm / 3000K / DALI / Spot 15° /
ø45mm

64464



Design: O/M + Bartenbach GmbH
Recessed spotlight with die-cast aluminium body with electrostatic 100% polyester paint finish.
Spot-lens with individual complex surface rips to provide a focal light and an extremely narrow beam.
Orientable by 150° horizontal rotation and 330° vertical rotation.
Driver included.

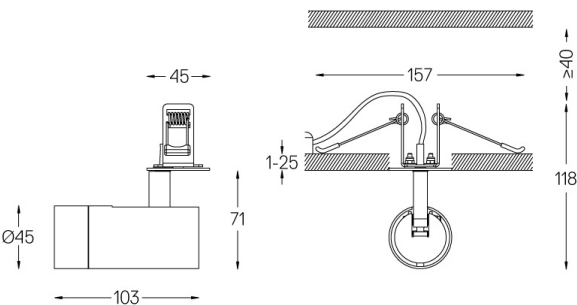
LED CRI>90 / >50.000h, L80/B10
2-step MacAdam / Driver included.
IP20 | 230Vac | 50/60Hz



LED	3000K	Light Source	Luminaire
Power		5,6W	7W
Flux		440lm	200lm
Efficiency		79lm/W	29lm/W
LOR		-	45%
Operating Condition		-	230Vac



Beam angle	Spot 15°
Application	
Weight	0,27Kg



Finishes
○ .01 White / RAL 9010
● .02 Black / RAL 9005

Optional
59072 1/4 CTO
ø35x1,1mm
59073 1/2 CTO
ø35x1,1mm
59074 Louvre
ø35x2mm
59075 Soft diffuser
ø35x2mm

The cutout dimensions are for plasterboard ceilings. For other type of material please contact: support@om-light.com