

5,6W / 430lm / 4000K / On/Off / Flood 59° /  
ø45mm

64474

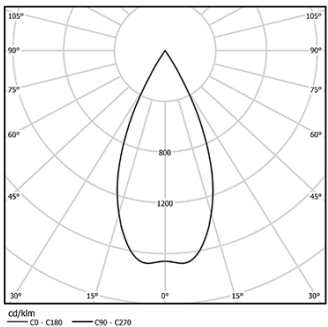


Design: O/M + Bartenbach GmbH  
Recessed spotlight with die-cast aluminium body  
with electrostatic 100% polyester paint finish.  
Spot-lens with individual complex surface rips to  
provide a focal light and an extremely narrow beam.  
Orientable by 150° horizontal rotation and 330°  
vertical rotation.  
Driver included.

LED CRI>90 / >50.000h, L80/B10  
2-step MacAdam / Driver included.  
IP20 | 230Vac | 50/60Hz



LED	4000K	Light Source	Luminaire
Power		5,6W	7W
Flux		460lm	430lm
Efficiency		82lm/W	61lm/W
LOR		-	93%
Operating Condition		-	230Vac

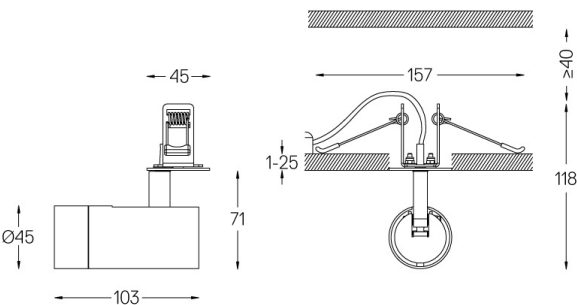


Beam angle  
Flood 59°

Application



Weight  
0,27Kg



Finishes

- .01 White / RAL 9010
- .02 Black / RAL 9005

Optional

- 59072 1/4 CTO  
ø35x1,1mm
- 59073 1/2 CTO  
ø35x1,1mm
- 59074 Louvre  
ø35x2mm
- 59075 Soft diffuser  
ø35x2mm

The cutout dimensions are for plasterboard ceilings. For other type of  
material please contact: support@om-light.com

Data according to regulations

2019/2020/EU supplemented by 2021/341 |2019/2015/EU  
supplemented by 2021/340/EU Energy Consumption Labelling  
Ordinance. This product contains a light source of efficiency class G  
Model Identifier 4053560313L