

3,2W / 140lm / 3000K / On/Off / Spot 17° / 150mm

65042



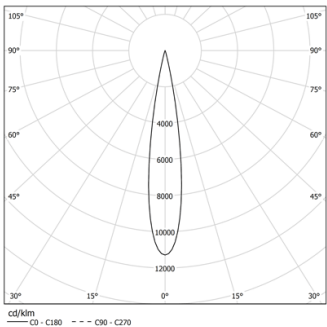
Design: O/M + Bartenbach GmbH

Luminaire with housing of aluminium profile with electrostatic 100% polyester paint with textured-finish.  
Focal-lens with complex surface and individual complex surface rips to provide a focal point through an aperture for glare free area illumination.  
Special springs available on request.

LED CRI>90 / >50.000h, L80/B10 / 2-step MacAdam  
Power supply included.  
IP20 | 230Vac | 50/60Hz



| LED        | 3000K | Light Source | Luminaire |
|------------|-------|--------------|-----------|
| Power      |       | 3,2W         | 4,1W      |
| Flux       |       | 320lm        | 140lm     |
| Efficiency |       | 100lm/W      | 34lm/W    |
| LOR        |       | -            | 44%       |
| UGR        |       | -            | <10       |

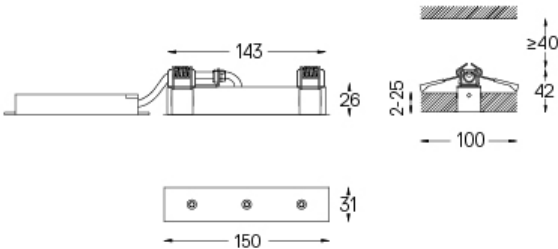


Beam angle  
Spot 17°

Application



Weight  
0,22Kg



Finishes

- .01 White / RAL 9010
- .02 Black / RAL 9005

The cutout dimensions are for plasterboard ceilings. For other type of material please contact: support@om-light.com