

Design: O/M + Bartenbach GmbH

Luminaire with housing of aluminium profile with electrostatic 100% polyester paint with textured-finish.

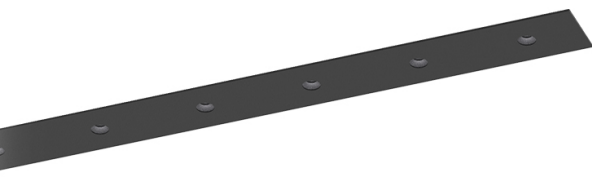
Focal-lens with complex surface and individual complex surface ribs to provide a focal point through an aperture for glare free area illumination.

Special springs available on request.

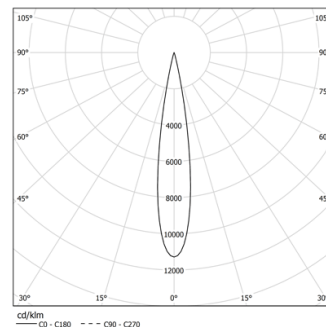
LED CRI>90 / >50.000h, L80/B10 / 2-step MacAdam

Power supply included.

IP20 | 230Vac | 50/60Hz



LED	3000K	Light Source	Luminaire
Power		26W	30,7W
Flux		2370lm	1040lm
Efficiency		94lm/W	34lm/W
LOR		-	44%
UGR		-	<10

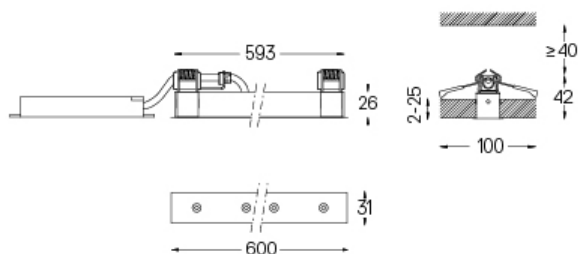


Beam angle
Spot 17°

Application



Weight
0,5Kg



Finishes

○ .01 White / RAL 9010

● .02 Black / RAL 9005

The cutout dimensions are for plasterboard ceilings. For other type of material please contact: support@om-light.com