



Design: O/M + Bartenbach GmbH  
Luminaire with housing of aluminium profile with electrostatic 100% polyester paint with textured-finish.  
Focal-lens with complex surface and individual complex surface rips to provide a focal point through an aperture for glare free area illumination.  
Special springs available on request.

LED CRI>90 / >50.000h, L80/B10 / 2-step MacAdam  
Power supply included.  
IP20 | 230Vac | 50/60Hz



LED	4000K	Light Source	Luminaire
Power		3,2W	4,1W
Flux		355lm	155lm
Efficiency		111lm/W	38lm/W
LOR		-	44%
UGR		-	<10

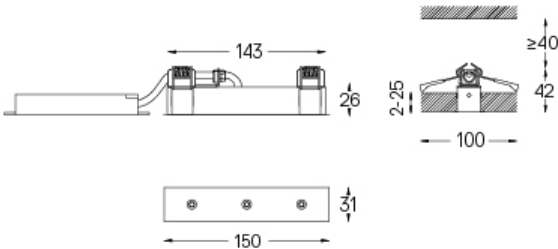


Beam angle  
Spot 17°

Application



Weight  
0,22Kg



Finishes

- .01 White / RAL 9010
- .02 Black / RAL 9005

For the specific supply of "DALI 2" drivers, please contact:  
support@om-light.com  
The cutout dimensions are for plasterboard ceilings. For other type of material please contact: support@om-light.com