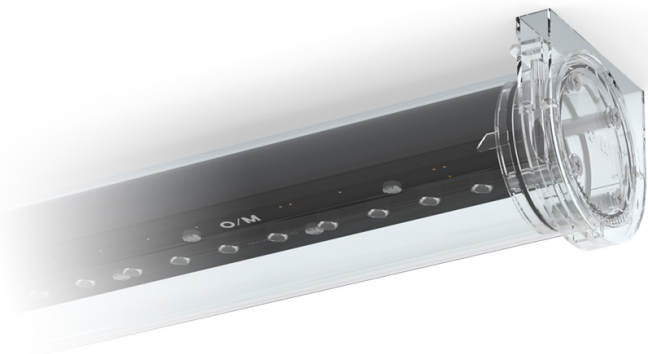


Tube Evo

18W / 2400lm / 4000K / DALI / Elliptical
19°x48° / 1022mm

43442



Design: O/M

Surface-mounted luminaire with tubular clear polycarbonate.

End caps in clear polycarbonate with marked installation angles.

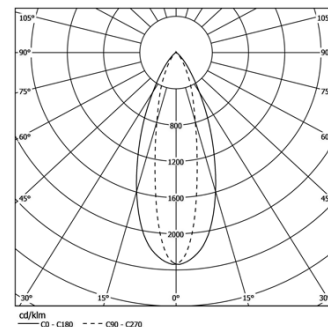
Supplied with fitting accessories and 1m cable: H05RN-F3G 1mm².

IP68 Connector supplied separately.

LED CRI>80 / >50.000h, L80/B10 / 3-step MacAdam
Equipped with DALI power supply.
IP67 | IK08 | 230Vac | 50/60Hz



LED	4000K	Light Source	Luminaire
Power		18W	21W
Flux		2400lm	1700lm
Efficiency		133lm/W	85lm/W
LOR		-	71%
UGR		-	<13



Beam angle
Elliptical 19°x48°

Application



Weight
0,9Kg

mm

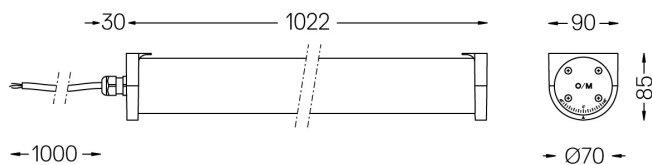
Finishes

• .20 Clear

Optional

43431 IP68 Connector

5 poles



Tube Evo

IP68 Connector 2 way

43431



Tube Evo IP68 Connector
5 poles, Ø7 to Ø12mm

IP68

Weight
0,04Kg

