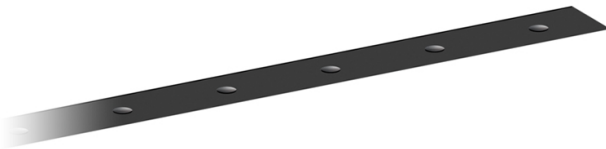


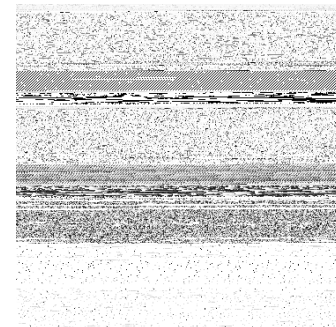
Design: O/M + Bartenbach GmbH
Recessed luminaire with housing and perforated cover plate made of aluminium with textured-paint finish.

Aluminium end caps.
Easy recessing system with spring clips.

LED CRI>90 / >50.000h, L80/B10 / 3-step MacAdam
700mA power supply included.
IP20 | 230Vac | 50/60Hz



LED	2700K	Light Source	Luminaire
Power		54W	60W
Flux		4800lm	3640lm
Efficiency		89lm/W	61lm/W
LOR		-	76%
UGR		-	<19



Beam angle
Wide flood 50°

Application



Weight

1mm

26x1193

Finishes

- .01 White / RAL 9010
- .02 Black / RAL 9005

