

10W / 780lm / 2700K / DALI / Spot 12° /
ø45mm

60294



Design: O/M

Recessed adjustable spotlight with aluminium body. The spotlight can be rotated up to 90° horizontally and 330° vertically.

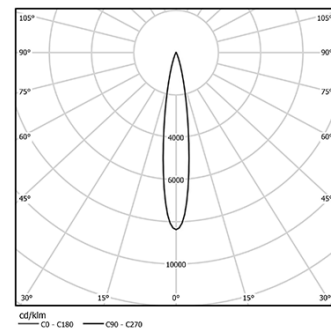
Easy recessing system with spring clips.

Accessories available separately and easily applicable after installation.

LED CRI>90 / >50.000h, L80/B10
2-step MacAdam / Power supply included.
IP20 | 230Vac | 50/60Hz



LED	2700K	Light Source	Luminaire
Power	10W		12,5W
Flux	955lm		780lm
Efficiency	96lm/W		62lm/W
LOR	-		82%
UGR	-		<13



Beam angle
Spot 12°

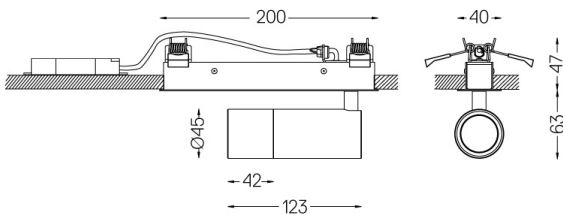
Application



Weight
0,6Kg



194x26



Finishes

- .01 White / RAL 9010
- .02 Black / RAL 9005

Optional

- 59016** Elliptical refractor
Ø39x0,5mm
- 59017** Soft diffuser
Ø39x0,5mm
- 59018** Louvre
Ø39x3mm
- 59019** Snoot 72mm
Ø45x72

For the specific supply of "DALI 2" drivers, please contact:
support@om-light.com

The cutout dimensions are for plasterboard ceilings. For other type of material please contact: support@om-light.com

Data according to regulations

2019/2020/EU supplemented by 2021/341 | 2019/2015/EU
supplemented by 2021/340/EU Energy Consumption Labelling
Ordinance. This product contains a light source of efficiency class F
Model Identifier 2053560245H