

10W / 720lm / 2700K / DALI / Medium 28° /
ø45x123mm

60989

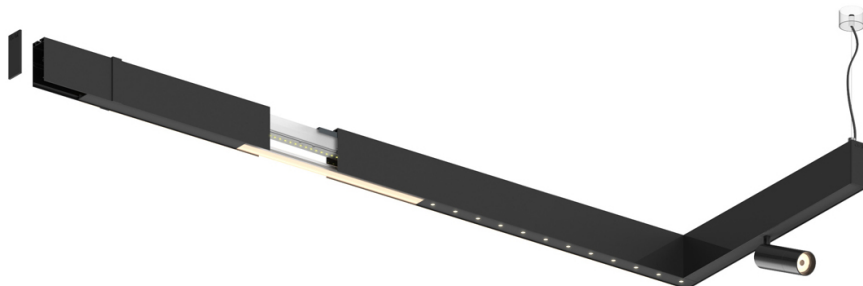
Design: O/M

Adjustable spotlight with aluminium body for installation on Sys35 systems.

The spotlight can be rotated up to 90° horizontally and 330° vertically.

Accessories available separately and easily applicable after installation.

LED CRI>90 / >50.000h, L80/B10
2-step MacAdam / power supply included.
IP20 | 230Vac | 50/60Hz



LED	2700K	Light Source	Luminaire
Power		10W	12W
Flux		955lm	720lm
Efficiency		96lm/W	60lm/W
LOR		-	75%
UGR		-	-



Beam angle
Medium 28°

Application

Weight
0,6Kg



Finishes

- .01 White / RAL 9010
- .02 Black / RAL 9005

Ordered separately

59016 Elliptical refractor

Ø39x0,5mm

59017 Soft diffuser

Ø39x0,5mm

59018 Louvre

Ø39x3mm

59019 Snoot 72mm

Ø45x72

Choose the length and layout of the system exactly as you want it, to model the right lighting functions for different tasks. For further information please contact: support@om-light.com

For the specific supply of "DALI 2" drivers, please contact: support@om-light.com