

---

ø45x123mm

60992

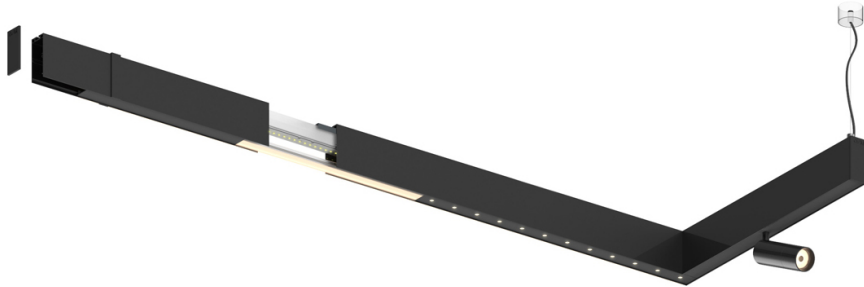
Design: O/M


**Adjustable spotlight with aluminium body for installation on Sys35 systems.**

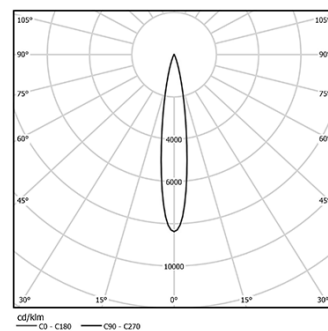
The spotlight can be rotated up to 90° horizontally and 330° vertically.

Accessories available separately and easily applicable after installation.

LED CRI>80 / >50.000h, L80/B10  
2-step MacAdam / power supply included.  
IP20 | 230Vac | 50/60Hz



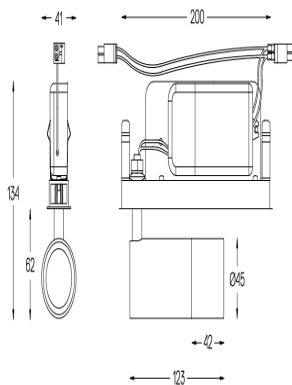
|   |       |              |           |
|---|-------|--------------|-----------|
|  LED | 3000K | Light Source | Luminaire |
| Power   |       | 10W          | 12W       |
| Flux  |       | 1190lm       | 980lm     |
| Efficiency  |       | 119lm/W      | 82lm/W    |
| LOR   |       | -            | 82%       |
| UGR   |       | -            | -         |



Beam angle  
**Spot 12°**

## Application

Weight  
0,6Kg



## Finishes

- ☐ .01 White / RAL 9010  
☒ .02 Black / RAL 9005

Ordered separately

**59016 Elliptical refractor**

Ø39x0,5mm

**59017 Soft diffuser**

Ø39x0,5mm

59018 Lou

Ø39x3mm

59019 9

Choose the length and layout of the system exactly as you want it, to model the right lighting functions for different tasks. For further information please contact: [support@om-light.com](mailto:support@om-light.com)

For the specific supply of "DALI 2" drivers, please contact:  
support@om-light.com