

32W / 3600lm / 4000K / DALI / Wide flood  
80° / 1747mm

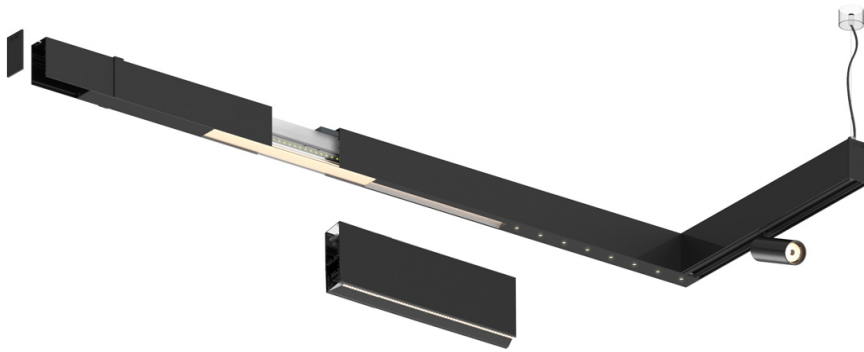
61186

Compatibility with other modules must be confirmed  
with [support@om-light.com](mailto:support@om-light.com)

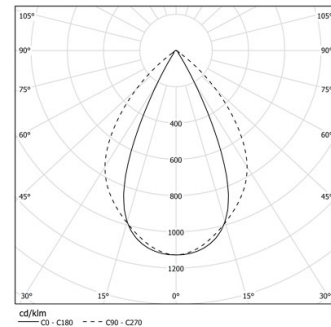
Design: OM + Bartenbach  
GmbH

Module with linear extruded lenses (Lightstream)  
combined with a secondary reflector, integrated into  
an extruded aluminium profile.

LED CRI>90 / >50.000h, L80/B10 / 2-step MacAdam  
Power supply included.  
IP20 | 230Vac | 50/60Hz



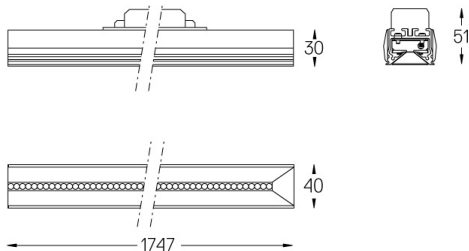
LED	4000K	Light Source	Luminaire
Power		32W	38W
Flux		4500lm	3600lm
Efficiency		142lm/W	97lm/W
LOR		-	0.8
UGR		-	<19



Beam angle  
**Wide flood 80°**

Application

Weight



### Finishes

- .01 White / RAL 9010
- .02 Black / RAL 9005

For the specific supply of "DALI 2" drivers, please contact:  
[support@om-light.com](mailto:support@om-light.com)

Choose the length and layout of the  
system exactly as you want it, to  
model the right lighting functions for  
different tasks. For further  
information please contact:  
[support@om-light.com](mailto:support@om-light.com)