

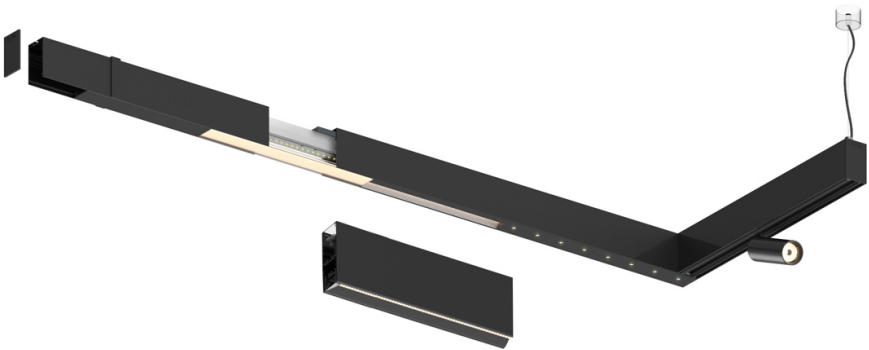
28W* / 2900lm* / 2200K-5000K / DALI /
Wide flood 80° / 1459mm


61192

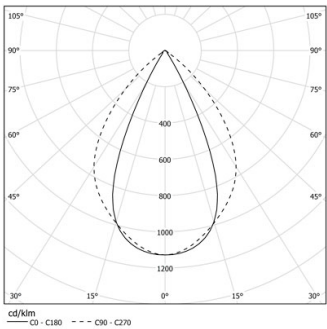
Compatibility with other modules must be confirmed
with support@om-light.com

Design: OM + Bartenbach
GmbH
Module with linear extruded lenses (Lightstream)
combined with a secondary reflector, integrated into
an extruded aluminium profile.

LED CRI>80 / >50.000h, L80/B10 / 2-step MacAdam
Power supply included.
IP20 | 230Vac | 50/60Hz



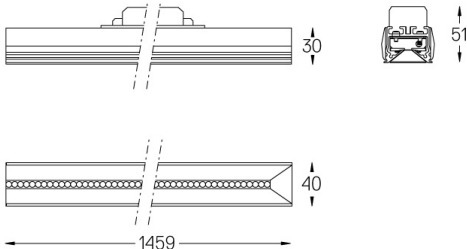
 LED	2200K-5000K	Light Source	Luminaire
Power	28W *	33W *	
Flux	3650lm *	2900lm *	
Efficiency	120lm/W	85lm/W	
LOR	-	0.8273381294964028	
UGR	-	<19	



Beam angle
Wide flood 80°

Application

Weight



Finishes

○ .01 White / RAL 9010

● .02 Black / RAL 9005

For the specific supply of "DALI 2" drivers, please contact:
support@om-light.com

Choose the length and layout of the system exactly as you want it, to
model the right lighting functions for different tasks. For further
information please contact: support@om-light.com