

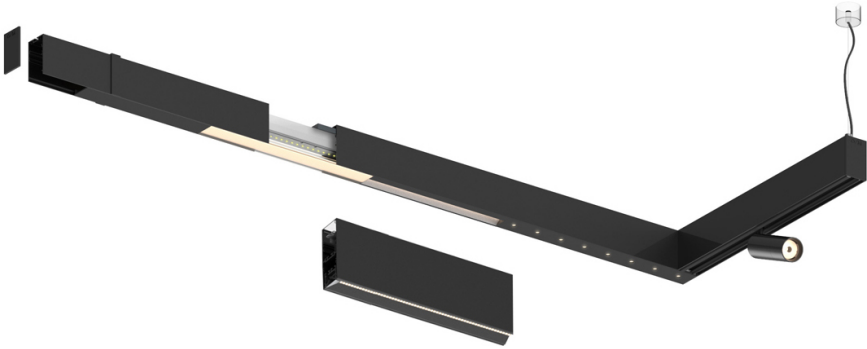
32W / 2050lm / 4000K / DALI / Asymmetric /
1200mm

61254

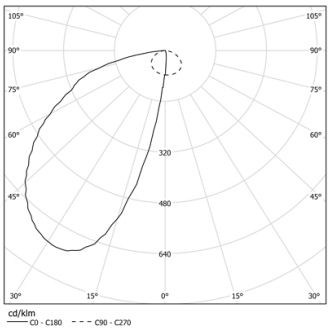
Compatibility with other modules must be confirmed
with support@om-light.com

Design: O/M + Bartenbach GmbH
LED light source with excellent colour consistency
and long operation lifespan.
Asymmetrical aluminium reflector.

LED CRI>80 / >50.000h, L80/B10
2-step MacAdam / power supply included.
IP20 | 230Vac | 50/60Hz



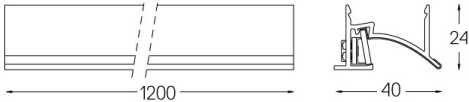
| LED | 4000K | Light Source | Luminaire |
|------------|-------|--------------|-----------|
| Power | | 32W | 38W |
| Flux | | 4480lm | 2050lm |
| Efficiency | | 140lm/W | 54lm/W |
| LOR | | - | 46% |
| UGR | | - | - |



Beam angle
Asymmetric

Application

Weight



Finishes

- .01 White / RAL 9010
- .02 Black / RAL 9005
- .03 Grey / RAL 9006

Choose the length and layout of the system exactly as you want it, to
model the right lighting functions for different tasks. For further
information please contact: support@om-light.com
For the specific supply of "DALI 2" drivers, please contact:
support@om-light.com