

## Sys45

### Onit module

10W / 870lm / 3000K / DALI / Medium 28° /  
ø45x123mm

61405

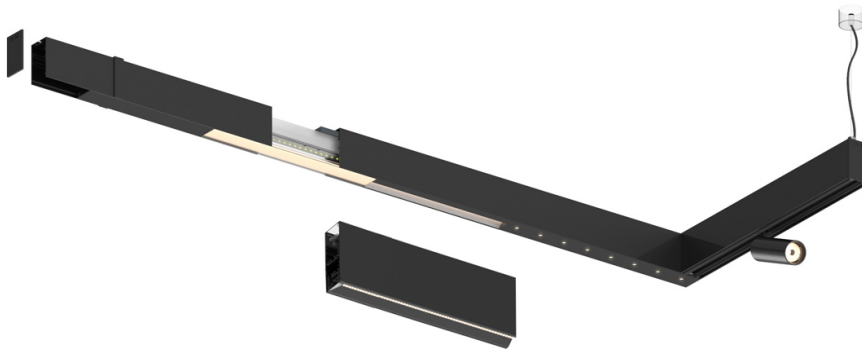
Design: O/M


Adjustable spotlight with aluminium body for installation on Sys45 systems.

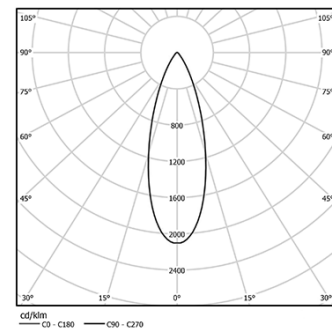
The spotlight can be rotated up to 90° horizontally and 330° vertically.

Accessories available separately and easily applicable after installation.

LED CRI>80 / >50.000h, L80/B10  
2-step MacAdam / power supply included.  
IP20 | 230Vac | 50/60Hz



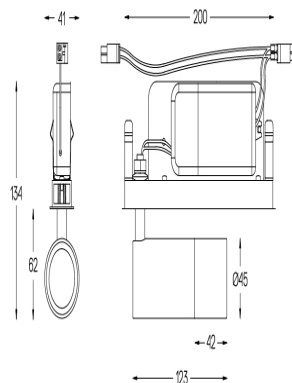
 LED	3000K	Light Source	Luminaire
Power		10W	12W
Flux		1190lm	870lm
Efficiency		119lm/W	73lm/W
LOR		-	73%
UGR		-	-



Beam angle  
Medium 28°

## Application

Weight



## Finishes

- ☐ .01 White / RAL 9010  
☒ .02 Black / RAL 9005

Ordered separately

**59016 Elliptical refractor**

Ø39x0,5mm

**59017 Soft diffuser**

Ø39x0,5mm

59018 Louvre

Ø39x3mm

**59019** Snoot 72mm

Ø45x72

Choose the length and layout of the system exactly as you want it, to model the right lighting functions for different tasks. For further information please contact: [support@om-light.com](mailto:support@om-light.com)

For the specific supply of "DALI 2" drivers, please contact:

support@om-light.com