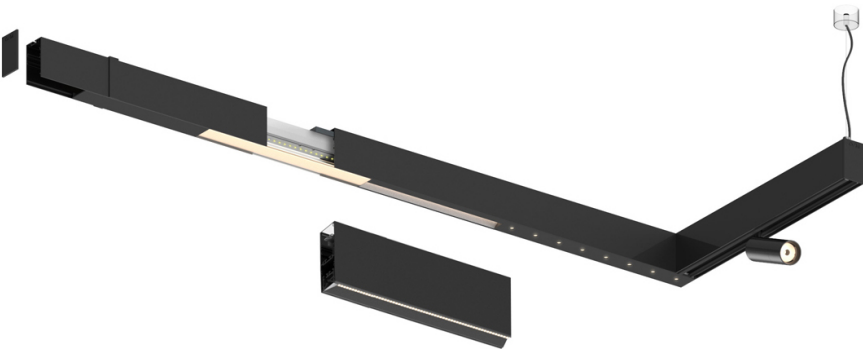



Design: O/M

Indirect module to Sys45 system with Linear lenses for batwing effect. Protected by a clear polycarbonate diffuser. ordered separately.

LED CRI>80 / >50.000h, L80/B10
3-step MacAdam / power supply included.
IP20 | 230Vac | 50/60Hz



 3000K	Light Source	Luminaire
	Power	4,2W
	Flux	550lm
	Efficiency	131lm/W
	LOR	-
	UGR	-



Beam angle

Diffuse

Application

Weight

Finishes

Choose the length and layout of the system exactly as you want it, to model the right lighting functions for different tasks. For further information please contact: support@om-light.com

