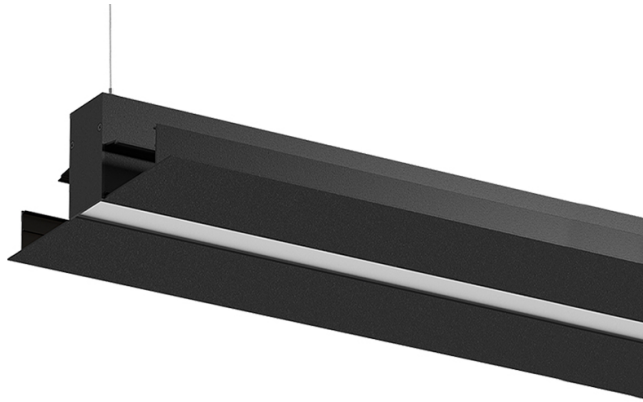


45W / 1700lm / 2700K / DALI / Diffuse /
1560mm

62334

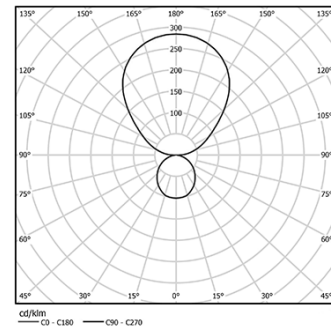


Design: Eduardo Souto de Moura
Pendant luminaire with housing made of aluminium profile with 25micron maximum corrosion resistance anodization with textured electrostatic 100% polyester paint.
Frosted acrylic diffuser with user friendly clipping system.
Steel end caps with textured electrostatic 100% polyester paint.
Frosted acrylic diffuser for direct light and indirect light.
Fitting accessories ordered Separately.

LED CRI>90 / >50.000h, L80/B10 / 3-step MacAdam
Power supply included.
IP20 | 230Vac | 50/60Hz



LED	2700K	Light Source	Luminaire
Power		45W	65W
Flux		4250lm	1700lm
Efficiency		94lm/W	26lm/W
LOR		-	40%
UGR		-	<25



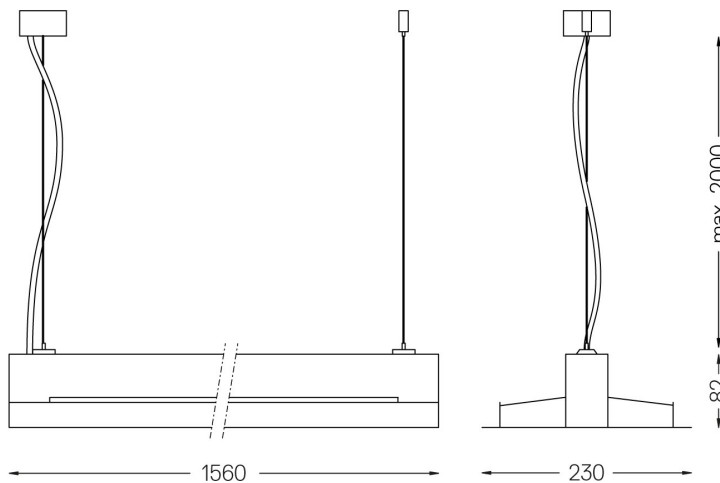
Beam angle
Diffuse

Application



Weight
7Kg

mm



Finishes

- .01 White / RAL 9010
- .02 Black / RAL 9005
- .03 Grey / RAL 9006

Mandatory

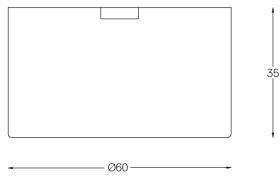
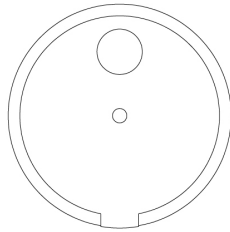
- 56051 Clear base DALI
Ø60x35mm
- 54081 Aluminium base DALI
Ø60x37mm

For the specific supply of "DALI 2" drivers, please contact:
support@om-light.com

Fitting accessory

56051

1mm



DALI (5x0,75mm²). Includes:
One clear polycarbonate power supply base (IP20).
One clear power cable (2m).
One clear power supply base must be applied every 30m (ø60x35mm)

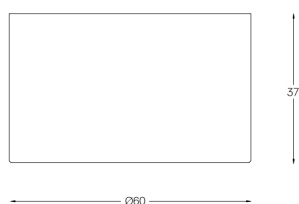
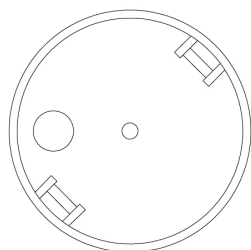
Finishes

● .20 Clear

Fitting accessory

54081

1mm



DALI (5x0,75mm²). Includes:
One aluminium power supply base (IP20).
One clear power cable (2m).
One aluminium power supply base must be applied every 30m (ø60x37mm)

Finishes

- .01 White / RAL 9010
- .02 Black / RAL 9005
- .10 Anodised aluminium