

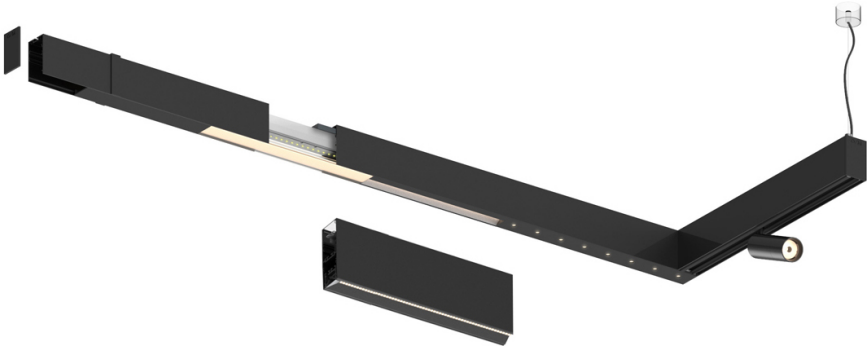



Compatibility with other modules must be confirmed with support@om-light.com

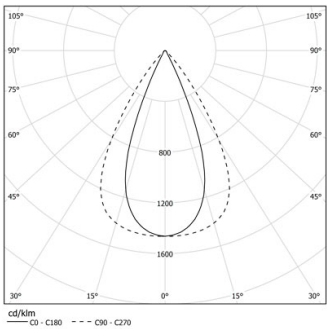
Design: OM + Bartenbach GmbH
Module with linear extruded lenses (Lightstream) combined with a secondary reflector, integrated into an extruded aluminium profile.

LED CRI>90 / >50.000h, L80/B10 / 2-step MacAdam
Power supply included.
IP20 | 230Vac | 50/60Hz



 4000K	Light Source	Luminaire
Power	37W	44W
Flux	5200lm	4160lm
Efficiency	141lm/W	96lm/W
LOR	-	0.8
UGR	-	<16



Beam angle
Flood 65°


Application

Weight

 mm

Finishes

 .01 White / RAL 9010

 .02 Black / RAL 9005

For the specific supply of "DALI 2" drivers, please contact: support@om-light.com

Choose the length and layout of the system exactly as you want it, to model the right lighting functions for different tasks. For further information please contact: support@om-light.com

